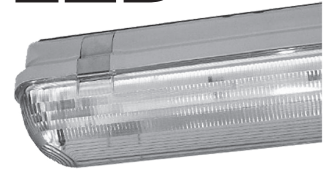


THORN WeatherForce LED



Installation Instructions

Warning

Please read these instructions carefully before installation or lamp replacement. Warranty of this product is subject to installation and maintenance being carried using appropriate conventional practices and/or any specific instructions enclosed within.

Installation must be carried out by a qualified electrician in accordance with local wiring regulations. Ensure that the rated voltage and frequency of the luminaire are compatible with the electrical supply.

Disconnect mains power supply before installing, servicing or maintaining the luminaire.

Changes to specification

The right is reserved to change the design and/or specification without prior notice or public announcement.

Specification

This luminaire is designed to comply with the requirements of AS/NZS 60598.

Supply Voltage: 240v ~ 50Hz

Classification For Protection: Against electric shock: Class 1 earthed metalwork. This luminaire must be earthed.

IP Rating: 65 - A 6-10mm Ø, circular electrical supply cable must be used to maintain the IP rating.

Maximum ambient operating temperature:
Up to Ta: 25°C



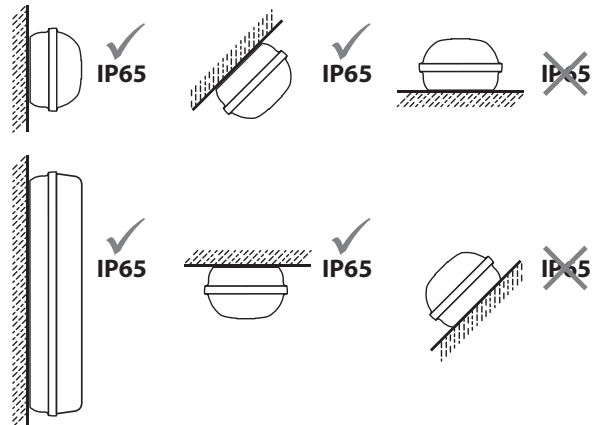
IP65

Product application

This strong impact resistant product is made from Polycarbonate. This material is ideal in waterproof & industrial applications. However, it is not suitable for use in areas prone to contact with solvents, detergents, oil, alkalis, organic chemicals, animal fats & industrial cleaners.

Please contact your local Thorn office for suitable alternative products to suit the above applications

Installation positions and IP rating



	Suspended Mounting	Direct Mounting
600mm Single	416mm	507mm
600mm Twin		
1200mm Single	880mm	980mm
1200mm Twin		

1. Remove the diffuser and gear tray

To install, remove diffuser, detach gear tray and maintenance suspension devices.



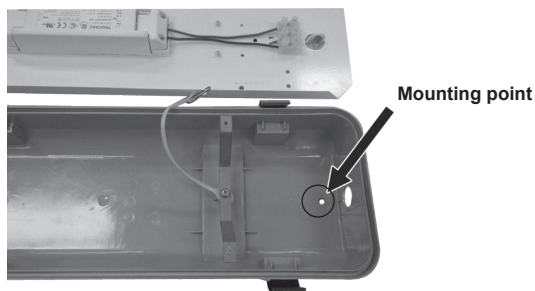
2. Mount the luminaire

The WeatherForce can be mounted by direct screw fixing through the housing. It should only be drilled at the appropriate marked points where the housing is suitably reinforced. Do not use oil.

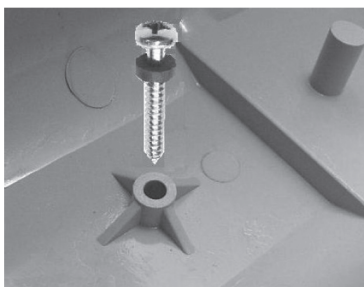
Note: Fixing screws and washers are NOT supplied.

It is recommended drill bits specifically designed for plastic are used. Standard metal or timber twist drills may be used but if not properly prepared for plastic they can instigate stress cracking which may spread under load.

Do not overtighten any screws into or in contact with the plastic housing. Permanent damage may occur even if not immediately obvious. Recommended maximum torque 1.5Nm



Note: If not suitably sealed with appropriate washers, glands or proprietary sealing kits any piercing of the housing will interfere with the IP rating of the product.

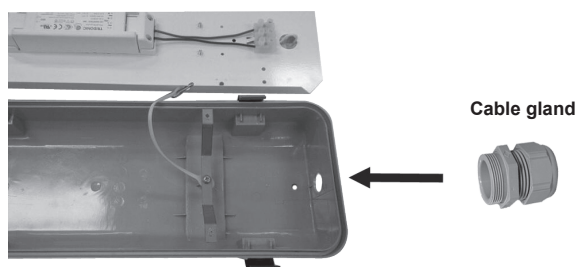


3. Attach conduit, cable glands and electrical supply cable to fitting.

It is recommended that installation is made using the end entry and gland kit provided with the fitting.

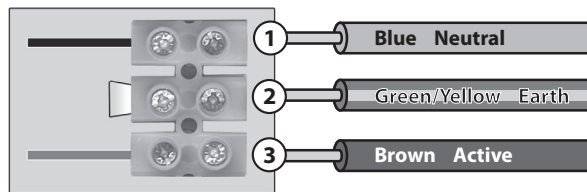
Warning: If the housing is pierced for back entry of cabling, do not run mains cabling past ballast, Temperatures exceed 100°C.

Fit the electrical supply cable, conduit and cable gland to the entry point on the base. Ensure the cable gland is tightened firmly.



4. Make the electrical connections

Make the electrical connections at the terminal block.



5. Secure the gear tray to the base

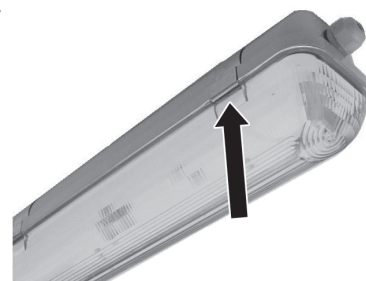
Attach the gear tray to the base. Tighten screws firmly.



8. Attach the diffuser

Fit the fluorescent lamp (ordered separately).

Attach the diffuser to the base. Ensure the diffuser is locked in place.



Mounting kits

Mounting kits suitable for surface mounting, or suspension mounting are available to order.

Order reference: **Single** - 96039252, **Twin** - 96039253.

