

THORN

Gladiator

A specialised high impact resistant luminaire for harsh environments



Gladiator®

Gladiator, a robust IP66 luminaire suitable to operate in ambient temperatures of up to 40°C.

Robust, marine grade die-cast aluminium with less than 1% Copper content (LM6 equivalent) to withstand the harshest environments.

Easy to install and maintain, suitable for a wide range of applications. Installation options include: Direct, Quick-fix bracket and concealed Secure bracket. Gladiator's unique single tool Safe-T Locking System (SLS) allows easy access.

Energy saving solutions, Gladiator offers the option of fluorescent and LED light engines with electronic control gear. For added energy saving solutions, eSMART Sensor options are available.



Impact resistant, a heavy duty polycarbonate diffuser (able to withstand up to 80 Joules), fits precisely in the channel of the body to ensure limited movement when faced with side impact.

Vandal resistant, with the unique Safe-T Locking System (SLS) making it almost impossible to access the interior of the fitting without the correct tools.

Dust and water resistant, with scientifically developed rear gaskets, side and rear (inverted) glands allowing ingress protection to be maintained at IP66 after installation.

Ready for Combat

Die-cast Body

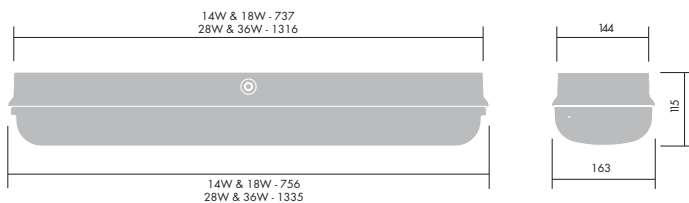
Gladiator is manufactured from die-cast aluminium with less than 1% copper content (LM6 equivalent). For further protection the body of the Gladiator is finished in a dark grey powder coat.

Polycarbonate Diffuser

The clear polycarbonate diffuser has been designed with a unique curvature and thickness to withstand high impacts of up to 4xIK10 (80 Joules). The diffuser fits precisely in the channel of the body to ensure limited movement when faced with side impact.

Safe-T Locking System (SLS)

The SLS is manufactured from a thermoplastic alloy of polycarbonate and acrylonitrile butadiene styrene (ABS). The combination of these materials ensures the SLS remains unharmed after impacts.



Gasket

IP66 is maintained as Gladiator uses a liquid poured gasket which provides outstanding adhesion to the luminaire. The gasket compound has a scientifically calculated density allowing a tight seal between the diffuser and body as well as body and mountable surface.

Easy to Clean

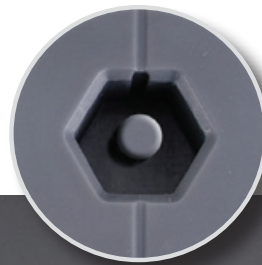
The body has a 35° slope angle and curved diffuser to shed dust and water. Gladiator meets the recommendations of the HACCP food safety certification program.

Extreme conditions

Gladiator is available with the option of a PC-Industry ballast (IHF). The PC Industry ballast has a life of up to 100,000 hours making it suitable for extreme ambient temperatures up to 55°C.

SLS Security Pin (SP)

Gladiator has the option of a security pin in the SLS locking shaft, which can only be opened with a unique key (ordered separately).



THORN

Safe-T Locking System (SLS)

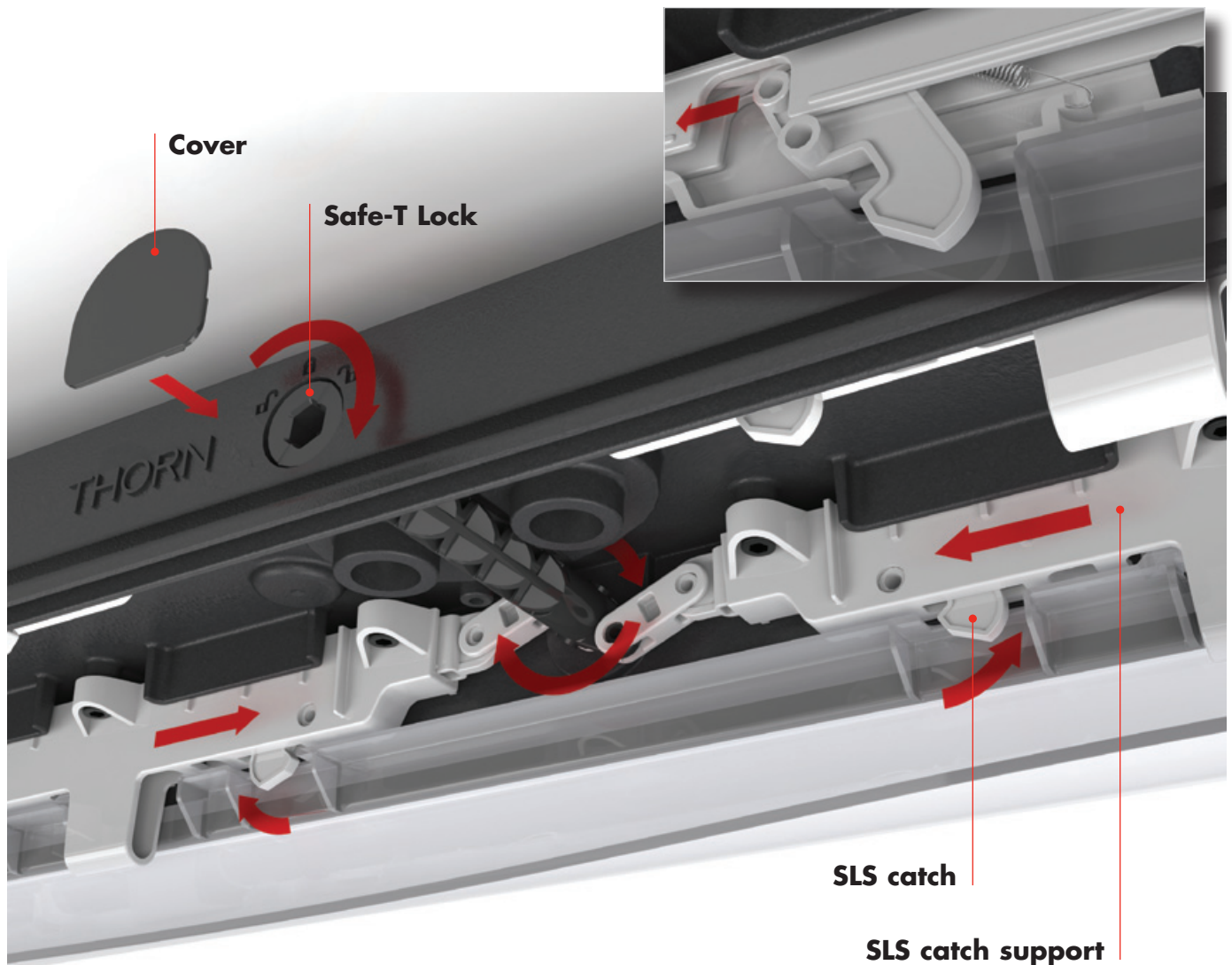
For added security to the Safe-T Locking System (SLS) the Gladiator comes standard with a cover.

A quarter turn of the Safe-T Lock will initiate the mechanical movement in the SLS. The diffuser will be released when the mechanical links rotate and pull inwards onto the miniature spring system located internally to the catch support.

The diffuser hinges on the catch support at a calculated angle allowing the diffuser to become a storage compartment for lamps during maintenance.

Benefits of SLS

- Vandal resistant
- Corrosion resistant (no externally locking clips)
- Easy to maintain
- Ease of luminaire installation
- Ensures IP66
- Improves IK rating



Ordering Guide Lamps to be ordered separately (except LED versions)

Description	Ilcos	Socket	Wt(kg)	SAP No
T8 (T26) High Frequency versions				
GLADIATOR 1X18 HF L000	FD	G13	4.8	96539397
GLADIATOR 2X18 HF L000	FD	G13	4.8	96539398
GLADIATOR 1X36 HF L000	FD	G13	8.0	96539399
GLADIATOR 2X36 HF L000	FD	G13	8.0	96539400
T8 (T26) High Frequency Industry versions				
GLADIATOR 1X36 IHF L000	FD	G13	8.1	96538178
GLADIATOR 2X36 IHF L000	FD	G13	8.1	96538180
T8 (T26) High Frequency Digital Dimming versions				
GLADIATOR 1X18 HFI L000	FD	G13	4.8	96538181
GLADIATOR 2X18 HFI L000	FD	G13	4.8	96538183
GLADIATOR 1X36 HFI L000	FD	G13	8.0	96538182
GLADIATOR 2X36 HFI L000	FD	G13	8.0	96538184
T8 (T26) High Frequency Emergency LED Module versions				
GLADIATOR 1X18 HF EL2 L000	FD	G13	5.2	96538201
GLADIATOR 2X18 HF EL2 L000	FD	G13	5.2	96538203
GLADIATOR 1X36 HF EL2 L000	FD	G13	8.4	96538202
GLADIATOR 2X36 HF EL2 L000	FD	G13	8.4	96538204
T8 (T26) High Frequency eSMART sensor versions				
GLADIATOR 1X18 HFIS L000	FD	G13	4.9	96538185
GLADIATOR 2X18 HFIS L000	FD	G13	4.9	96538187
GLADIATOR 1X36 HFIS L000	FD	G13	8.1	96538186
GLADIATOR 2X36 HFIS L000	FD	G13	8.1	96538188
LED versions				
GLADIATOR LED 2000 26W HF L840	-	-	4.8	96538209
GLADIATOR LED 4000 49W HF L840	-	-	8.0	96538210
LED eSMART sensor versions				
GLADIATOR LED 2000 26W HFIS L840	-	-	4.9	96538211
GLADIATOR LED 4000 49W HFIS L840	-	-	8.1	96538212
T5 (T16) High Frequency versions				
GLADIATOR 1X14 HF L000	FDH	G5	4.8	96538189
GLADIATOR 2X14 HF L000	FDH	G5	4.8	96538191
GLADIATOR 1X28 HF L000	FDH	G5	8.0	96538190
GLADIATOR 2X28 HF L000	FDH	G5	8.0	96538192
T5 (T16) High Frequency Digital Dimming versions				
GLADIATOR 1 14 HFI L000	FDH	G5	4.8	96538193
GLADIATOR 2 14 HFI L000	FDH	G5	4.8	96538195
GLADIATOR 1 28 HFI L000	FDH	G5	8.0	96538194
GLADIATOR 2 28 HFI L000	FDH	G5	8.0	96538196
T5 (T16) High Frequency Emergency LED Module versions				
GLADIATOR 1X14 HF EL2 L000	FDH	G5	5.2	96538205
GLADIATOR 2X14 HF EL2 L000	FDH	G5	5.2	96538207
GLADIATOR 1X28 HF EL2 L000	FDH	G5	8.4	96538206
GLADIATOR 2X28 HF EL2 L000	FDH	G5	8.4	96538208
T5 (T16) High Frequency eSMART sensor versions				
GLADIATOR 1X14 HFIS L000	FDH	G5	4.9	96538197
GLADIATOR 2X14 HFIS L000	FDH	G5	4.9	96538199
GLADIATOR 1X28 HFIS L000	FDH	G5	8.1	96538198
GLADIATOR 2X28 HFIS L000	FDH	G5	8.1	96538200
Accessories				
GLADIATOR SECURE BRACKET KIT	-	-	-	96538245
GLADIATOR QUICK-FIX BRACKETS KIT	-	-	-	96538244
GLADIATOR SP SECURITY KEY	-	-	-	96539525

For Security Pin (SP) versions, add SP at the end of the SAP No. For Example - 96539397SP, SP key ordered separately.

THORN

LIGHTING PEOPLE

Head Offices

Australia

Sydney

Thorn Lighting Pty Limited
43 Newton Road
Wetherill Park NSW 2164
Tel: 1300 13 99 65
Fax: (02) 9612 2700
e-mail: infoaustralia@thornlighting.com
www.thornlighting.com.au

New Zealand

Auckland

Thorn Lighting (NZ) Limited
399 Rosebank Road
Avondale, Auckland 1026
Tel: 0800 800 834
Fax: (09) 828 7591
e-mail: info.NZ@thornlighting.com
www.thornlighting.co.nz

Australian Branches

New South Wales

Sydney

43 Newton Road
Wetherill Park NSW 2164
Tel: 1300 13 99 65
Sales Fax: 1300 13 99 53
Project Fax: 1300 13 99 57

South Australia

Adelaide

1 Graham Street
Export Park SA 5950
Tel: 1300 13 99 65
Sales Fax: 1300 13 99 53
Project Fax: 1300 13 99 57

Northern Territory

Darwin

Coonawarra Road
Winnellie N.T. 0820
Tel: 1300 13 99 65
Sales Fax: 1300 13 99 53
Project Fax: 1300 13 99 57

Victoria

Melbourne

55 McGregors Drive
Keilor Park VIC 3042
Tel: 1300 13 99 65
Sales Fax: 1300 13 99 53
Project Fax: 1300 13 99 57

Western Australia

Perth

2/32 Sarich Court
Osborne Park WA 6017
Tel: 1300 13 99 65
Sales Fax: 1300 13 99 53
Project Fax: 1300 13 99 57

Queensland

Brisbane

2/106 Fison Avenue West
Eagle Farm QLD 4009
Tel: 1300 13 99 65
Sales Fax: 1300 13 99 53
Project Fax: 1300 13 99 57

Tasmania

Hobart

12 Fleet Street
Moonah TAS 7009
Tel: 1300 13 99 65
Sales Fax: 1300 13 99 53
Project Fax: 1300 13 99 57

New Zealand Branches

Wellington

Unit 12, 4 Tyers Road,
Ngauranga, Wellington 6035
Tel: (04) 569 4826
Fax: (04) 589 0497

Christchurch

11 Lancaster Street,
Waltham, Christchurch 8011
Tel: (03) 366 2485
Fax: (03) 366 8905

Thorn Lighting is constantly developing and improving its products. All descriptions, illustrations, drawings and specifications in this publication present only general particulars and shall not form part of any contract. The right is reserved to change specifications without prior notification or public announcement. All goods supplied by the company are supplied subject to the company's General Conditions of Sale, a copy of which is available on request. All measurements are in millimetres and weights in kilograms unless otherwise stated.

Publication Date: 09/2012