

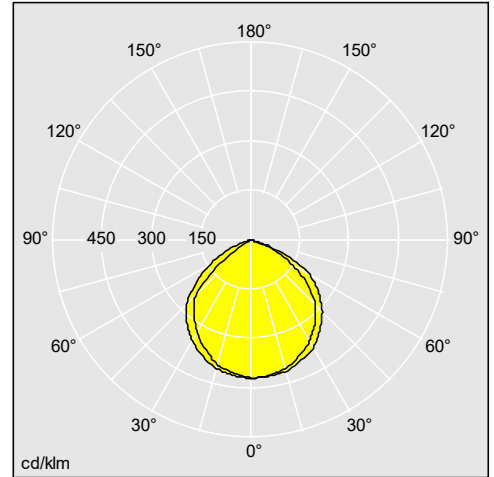
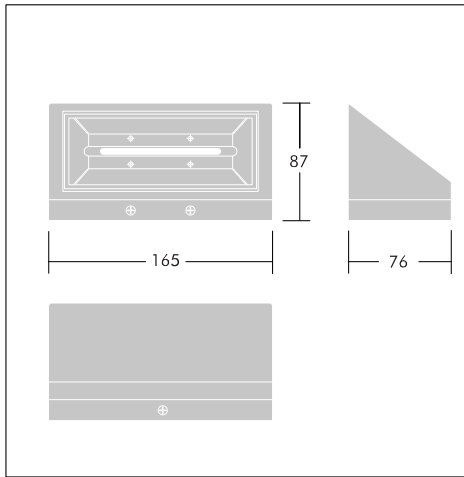
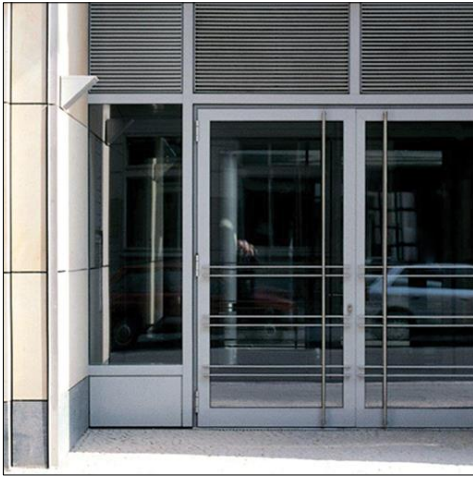
## WallPack LED

### Sleek and modern design up/down lighter

- LED wall mounted light fitting designed for interior and exterior locations
- Colour temperature 2700K (warmwhite) & 7000K (daylight)
- Operating temperature -10°C to 50°C
- Useful life L70 50,000 hours



Photographs, line drawings and photometric data are representative only. For specific product detail please select an individual product.



96545556

### Material/Finish

Body: mild steel sheet silver finish.  
Diffuser: UV stabilized, opal acrylic.  
High purity aluminium reflector and thermal radiator.  
3mm high strength tempered glass cover.

### Installation/Mounting

Suitable for universal mounting, can be used for upward, sideways or downward illuminations. Determine mounting position and mark outline & entry cable position appropriately. Remove the three screws attaching the mounting bracket to back plate. Use mounting bracket as template to mark locations for fixing screws or fasteners.