

THORN

Olsys



A unique versatile LED lantern
covering a wide range of
applications and installations in
one minimalistic design

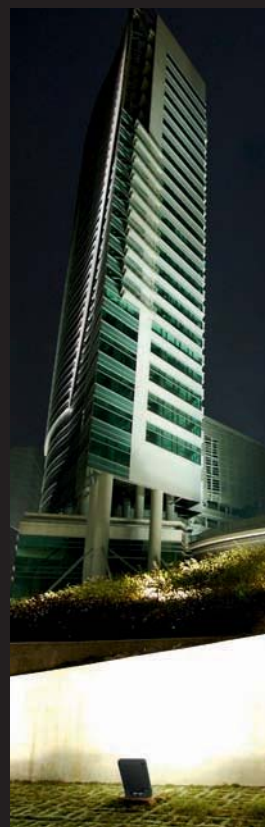


- Olsys offers 3 unique optics and 4 lumen packages
- Reduced maintenance with long LED life of up to 70,000 hours L70 at Ta 40°C

- For optimum spacing and reduced glare, each LED incorporates its own micro reflectors and lenses
- To reduce CO₂ emissions and conserve energy, Olsys (Street optic only) is equipped with automatic (bi-level) BP dimming functionality

- Urban area lighting
- Building surrounds
- P category applications
- Car parks
- Loading bays
- Signage

- Urban street lighting
 - Plaza areas
 - Train stations
 - Pathway lighting
 - Parks
-
- Building façades
 - Hotels
 - Retail and leisure centres

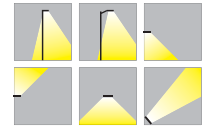


Olsys Flood/Area NEW

Standards



Lamps



Durable, versatile and efficient LED floodlights for outdoor and indoor area lighting

- Wide range including two sizes, four lumen packages, two colour temperatures, tilting angles $-90^{\circ}/+90^{\circ}$ and three mounting options
- Exceptionally low cost of ownership with an optimised heat management system to provide a lifetime of up to 70,000 hours (L70, 40°)
- Extremely durable full die-cast aluminium and IP66/IK08 rated package, complete with 10Kv surge protection
- Minimalist design is coordinated with other Olsys luminaires and brackets, seamlessly integrating with the environment
- Offers the complete solution for a building project with Olsys street and Olsys Illumination covering the façade to car park and access roads. Olsys Flood/Area can also be used in indoor halls.

Applications

- Urban area lighting
- Building surrounds
- Indoor area lighting (size 2)
- Car parks
- Loading bays
- Signage

Lamp Information

- Lifetime 70,000 Hours @L70 Ta 40°C
Lifetime 80,000 Hours @L70 Ta 25°C
- Up to 7400Lm (24/45/70/90W) and 82Llm/W
- Up to 9700lm and 108lm/W (module)
- Colour Temperature 3000K and 4000K
- CRI: 75
- Asymmetric optic: size 1: 30°, size 2: 40°
- Surge protection 10Kv

Mounting options



Wall mounting



Surface mounting



Post top bracket



Optics

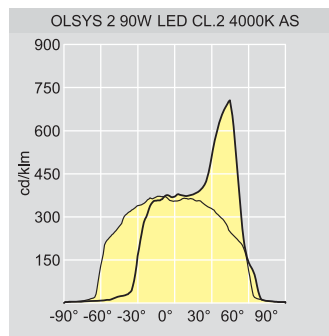
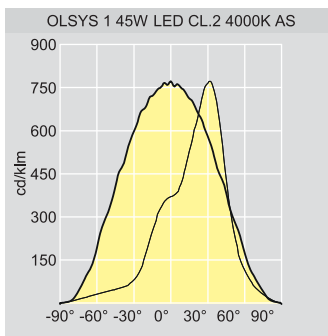


Size 1



Size 2

Overview



Materials/Finish

Body: die-cast aluminium powder coated silver grey 9006
 Enclosure: size 1 clear UV stabilised PC
 size 2: tempered glass
 Optics: size 1 PC, size 2 micro reflectors in highly reflective anodised aluminium
 Screws: stainless steel

Installation/Mounting

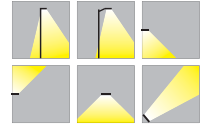
Size 2 supplied pre-wired with connector
 Delivered ready to install for wall mounting, knock out on the side of the base for cabling when it is not integrated within the wall. Possibility to post top mount with Olsys post-top (MPT) accessory. Delivered with factory fitted integral gear, all supplied in one box. Maintenance: access to gear (replaceable) via 4 screws from the canopy.

Olsys Flood/Area NEW

Standards



Lamps



Ordering Guide - Olsys 1 Flood/Area

Luminaires supplied complete with LEDs and ready for surface/wall mounting. For pole installation order mounting attachment.

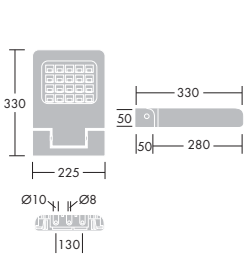
Description	Wt (kg)	SAP Code
OLSYS 1 Flood/Area		
OLSYS1 24W LED CL2 4000K A/S	2.8	96262336
OLSYS1 24W LED CL2 3000K A/S	2.8	96262337
OLSYS1 45W LED CL2 4000K A/S	2.8	96262338
OLSYS1 45W LED CL2 3000K A/S	2.8	96262339
OLSYS 1 mounting attachments		
OLSYS1 MPT 60/76	1.4	96262299
OLSYS1 MPT 60/76 X2	2.1	96262298
OLSYS1 MLE 60MA	1.2	96262297

MPT - Post top
MLE - Side entry

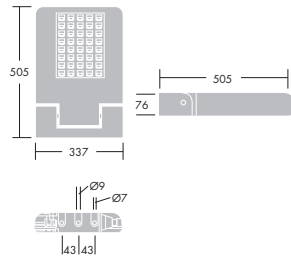
Ordering Guide - Olsys 2 Flood/Area

Luminaires supplied complete with LEDs and ready for surface/wall mounting. For pole installation order mounting attachment.

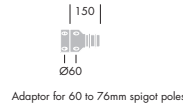
Description	Wt (kg)	SAP Code
OLSYS 2 Flood/Area		
OLSYS2 70W LED CL2 4000K A/S	8.45	96262344
OLSYS2 70W LED CL2 3000K A/S	8.45	96262345
OLSYS2 90W LED CL2 4000K A/S	8.45	96262346
OLSYS2 90W LED CL2 3000K A/S	8.45	96262347
OLSYS 2 mounting attachments		
OLSYS2 MPT 60/76	2.9	96262304
OLSYS2 MPT 60/76 X2	5.0	96262305
OLSYS2 MLE 60MA	2.6	96262303



Windage: 0.07m²



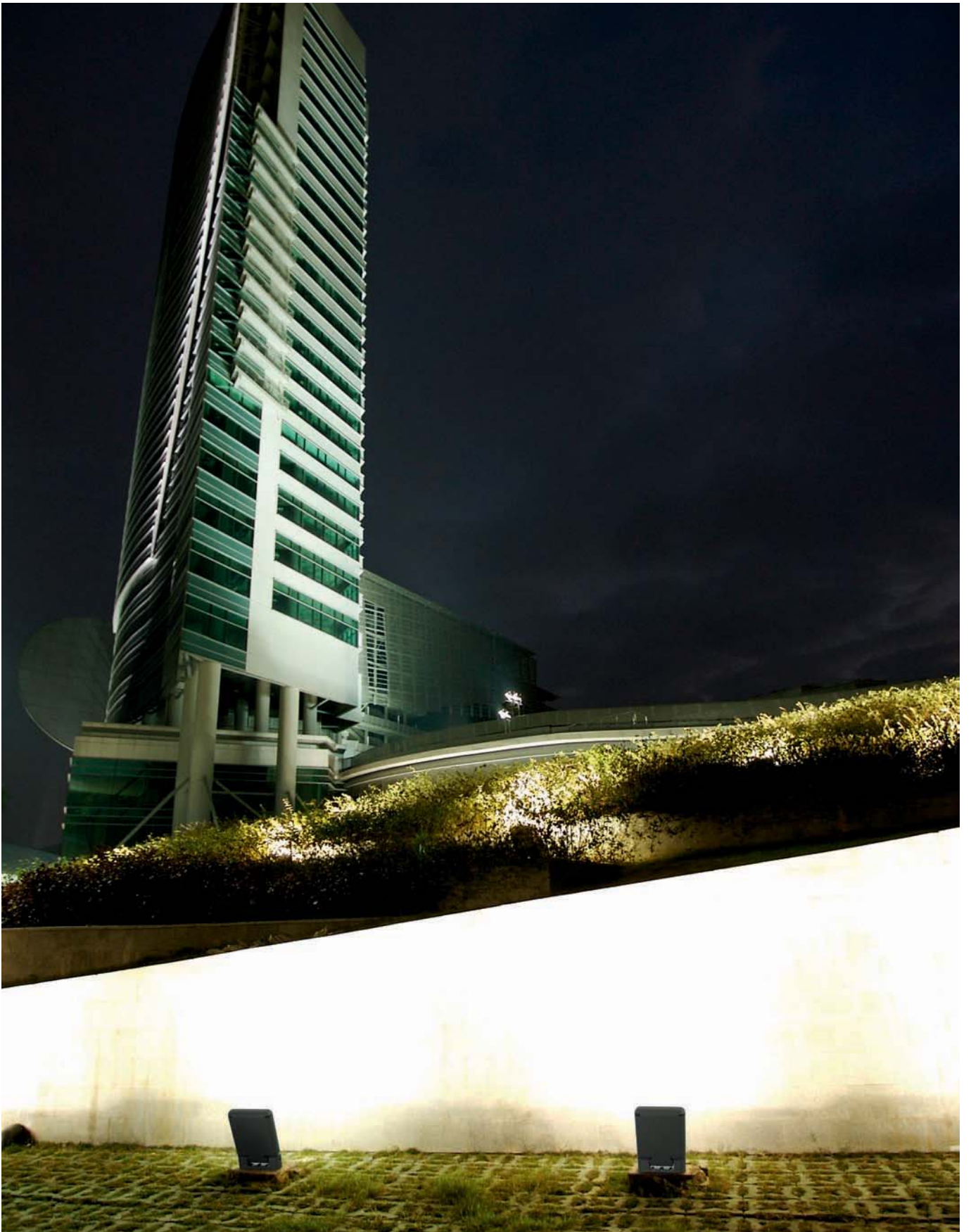
Windage : 0.17m²



Adaptor for 60 to 76mm spigot poles



Twin adaptor for 60 to 76mm spigot poles



Olsys Illumination NEW

Standards



Lamps



Discreet, durable and efficient LED floodlight for creating decorative lighting effects

- No accessories required for the decorative lighting effects
- Fully adjustable tilt (-90°/+90°) ideal flexibility for signage illumination
- Exceptionally low cost of ownership with an optimised heat management system to provide a lifetime up to 70,000 hours (L70, 40°)
- Extremely durable full die-cast aluminium and IP66/IK08 rated package, complete with 10Kv surge protection

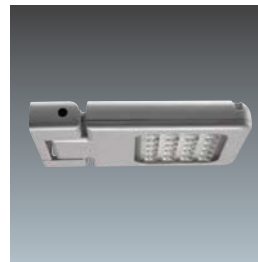
Applications

- Building façades
- Hotels
- Retail and leisure centres

Lamp Information

- Life time 80,000 Hours @L70 Ta 25°C or Life time 70,000 Hours @L70 Ta 40°C
- Up to 3576Llm (24/45W) and 79Llm/W
- Up to 4800lm and 106lm/W (module)
- Colour Temperature 3000K and 4000K
- CRI: 75
- Optic: 2X6° angle
- Surge protection 10Kv

Options



Surface or wall mounting



-90°/+90° tilting



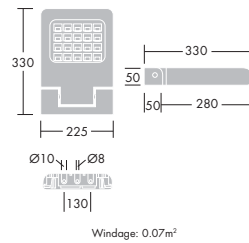
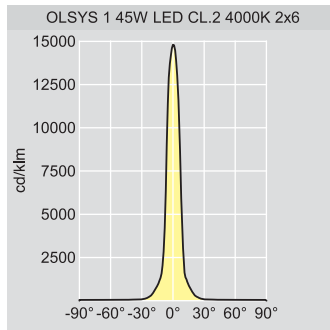
Beam effect



Optics



Overview



Ordering Guide - Olsys Illum

Luminaires supplied complete with LEDs and ready for surface/wall mounting. For pole installation order mounting attachment.

Description	Wt (kg)	SAP Code
OLSYS Illum luminaires		
OLSYS1 24W LED CL2 4000K 2X6°	2.8	96262352
OLSYS1 24W LED CL2 3000K 2X6°	2.8	96262353
OLSYS1 45W LED CL2 4000K 2X6°	2.8	96262354
OLSYS1 45W LED CL2 3000K 2X6°	2.8	96262355
OLSYS 1 mounting attachments		
OLSYS1 MPT 60/76	1.4	96262299
OLSYS1 MPT 60/76 X2	2.1	96262298
OLSYS1 MLE 60MA	1.2	96262297

MPT - Post top
MLE - Side entry

Materials/Finish

Body: die-cast aluminium powder coated silver grey 9006
Enclosure: clear UV stabilised PC
Optics: PC
Screws: stainless steel

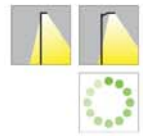
Installation/Mounting

Delivered ready to install for wall mounting, knock out on the side of the base for cabling when it is not integrated within the wall. Possibility to post top mount with Olsys 1 MPT accessories. Delivered with factory fitted integral gear, all supplied in one box. Maintenance: access to gear (replaceable) via 4 screws from the canopy.

Standards



Lamps



A unique versatile LED street lantern covering a wide range of P category applications in one minimalistic design

- State-of-the-art LED engine in line with EN13201 and ULOR 0%
- Integrated BP (bi-level) dimming as standard to reduce energy consumption during the night
- Exceptionally low cost of ownership with an optimised heat management system to provide a lifetime up to 70,000 hours (L70, 40°)
- Extremely durable full die-cast aluminium and IP66 rated package available with lenses or micro reflectors
- Discreet design is coordinated with other Olsys luminaires and available with a wide range of mounting options

Applications

- Urban street lighting
- Building surrounds
- Train stations
- Car parks
- Parks

Lamp Information

- Life time 100,000 Hours @L70 Ta 25°C or 70,000 hours @ L70 Ta 40°C
- Up to 7000Lm (24/45/70/90W) and 76Llm/W
- Up to 9700lm and 108lm/W (module)
- Colour Temperature 3000K and 4000K
- CRI: 75
- Stand alone power reduction as standard: 54% for 8 hours (3h before calculated midpoint, 5h after).
- Surge protection 10Kv

New Projects

Wide choice of bracket packages



Long bracket



Post top bracket



Side entry



Double post top bracket



Double long bracket



Renovation Projects

One single accessory to adapt the product on existing 60mm poles and brackets



Side entry variant with MLE 60 accessory, possibility to correct the tilt of the bracket to reduce ULOR



Post top variant with MPT 60 accessory, possibility to tilt the lantern to optimise spacing

Materials/Finish

Body: die-cast aluminium
 powder coated silver grey 9006 finish
 Enclosure: size 1 clear UV stabilised PC
 size 2: tempered glass
 Optics: size 1 PC, size 2 micro reflectors in highly reflective anodised aluminium
 Screws: stainless steel
 Brackets and mounting accessoires: aluminium

Installation/Mounting

Fitting and mounting accessories delivered separately.
 Product supplied pre-wired with connector
 Recommended mounting heights:
 Olsys Street 1: 4m
 Olsys Street 2: 6 to 8m
 Access to gear (replaceable) via 4 screws from the canopy

Olsys Street ^{NEW}

To order complete unit, please order a luminaire and mounting accessory. All brackets require poles drilled in the top for cabling.



Complete unit

=

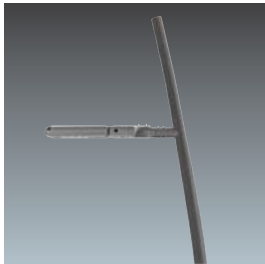


Luminaire

+



Mounting accessory MPT 60/76



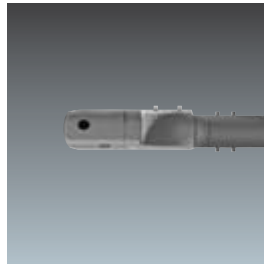
Complete unit

=



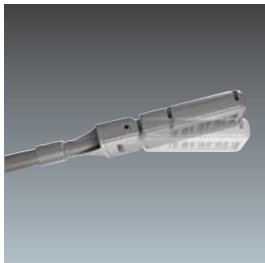
Luminaire

+



Mounting accessory MLE 47MA

For poles and brackets with 60mm spigot



Complete unit

=



Luminaire

+



Mounting accessory



Complete unit

=



Luminaire

+



Mounting accessory

Overview



Size 1: Lenses



Size 2: Micro reflectors

Olsys 1 Street

To order a complete fitting, please select a luminaire and a mounting attachment. Luminaires supplied complete with LEDs.

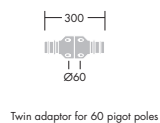
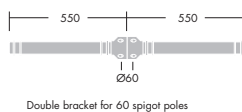
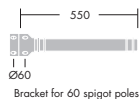
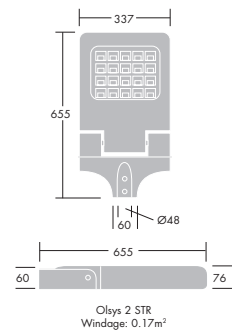
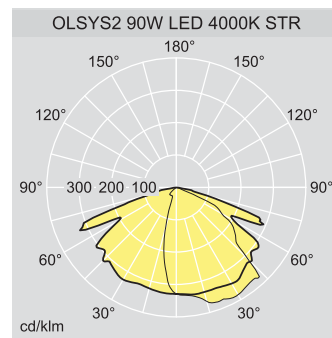
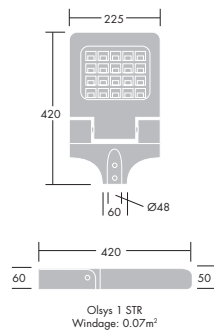
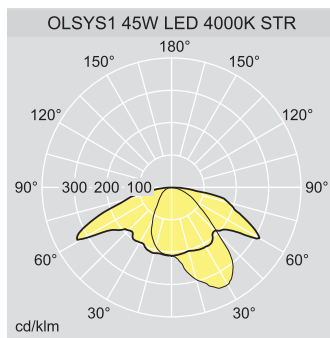
Description	Wt (kg)	SAP Code
OLSYS 1 Street luminaires		
OLSYS1 24W/BP5 LED CL2 4000K STR	2.8	96262309
OLSYS1 24W/BP5 LED CL2 3000K STR	2.8	96262310
OLSYS1 45W/BP5 LED CL2 4000K STR	2.8	96262311
OLSYS1 45W/BP5 LED CL2 3000K STR	2.8	96262312
OLSYS 1 Street mounting attachments		
OLSYS1 MLE 60MA	1.2	96262297
OLSYS1 MPT 60/76	1.4	96262298
OLSYS1 MPT 60/76 X2	2.1	96262299
OLSYS1 BRA 500MM MTP	3.9	96262300
OLSYS1 BRAX2 1000MM MTP	6.9	96262301
OLSYS1 MLE 47MA	1.2	96262302

Olsys 2 Street

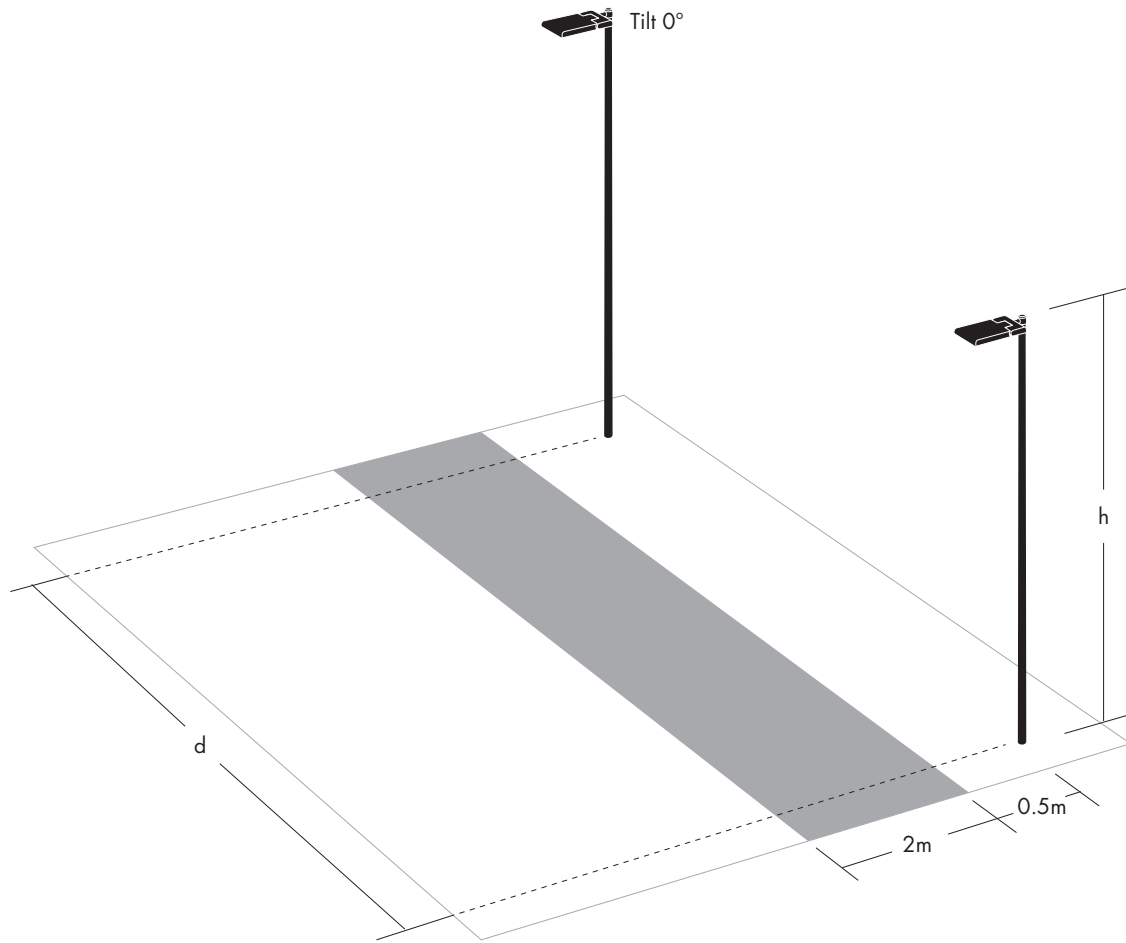
To order a complete fitting, please select a luminaire and a mounting attachment. Luminaires supplied complete with LEDs.

Description	Wt (kg)	SAP Code
OLSYS 2 Street luminaires		
OLSYS2 70W/BP8 LED CL2 4000K STR	8.45	96262321
OLSYS2 70W/BP8 LED CL2 3000K STR	8.45	96262322
OLSYS2 90W/BP8 LED CL2 4000K STR	8.45	96262323
OLSYS2 90W/BP8 LED CL2 3000K STR	8.45	96262324
OLSYS 2 Street mounting attachments		
OLSYS2 MLE 60MA	2.6	96262303
OLSYS2 MPT 60/76	2.9	96262304
OLSYS2 MPT 60/76 X2	5	96262305
OLSYS2 BRA 500MM MPT	5.3	96262306
OLSYS2 BRAX2 1000MM MPT	10	96262307
OLSYS2 MLE 47MA	2.6	96262308

BRA: bracket
MPT: post top
MLE: side entry
BP8: Power reduction for 8 hours



Olsys Spacing Data



SAP Code	Description	h			
		3m	4m	6m	8m
P1 Category					
96262309	OLSYS1 24W/BP5 LED CL2 4000K STR + 96262297 OLSYS1 MLE 60MA	8.8m	10.7m	12.6m	9.2m
96262311	OLSYS1 45W/BP5 LED CL2 4000K STR + 96262297 OLSYS1 MLE 60MA	10.6m	13.1m	16.5m	18.4m
96262321	OLSYS2 70W/BP8 LED CL2 4000K STR + 96262303 OLSYS2 MLE 60MA	-	-	15.8m	17.8m
96262323	OLSYS2 90W/BP8 LED CL2 4000K STR + 96262303 OLSYS2 MLE 60MA	-	-	17.3m	19.2m
P2 Category					
96262309	OLSYS1 24W/BP5 LED CL2 4000K STR + 96262297 OLSYS1 MLE 60MA	11.4m	13.7m	17.4m	19.7m
96262311	OLSYS1 45W/BP5 LED CL2 4000K STR + 96262297 OLSYS1 MLE 60MA	13.0m	17.2m	22.5m	26.2m
96262321	OLSYS2 70W/BP8 LED CL2 4000K STR + 96262303 OLSYS2 MLE 60MA	-	-	20.6m	24.3m
96262323	OLSYS2 90W/BP8 LED CL2 4000K STR + 96262303 OLSYS2 MLE 60MA	-	-	21.7m	26.1m
P3 Category					
96262309	OLSYS1 24W/BP5 LED CL2 4000K STR + 96262297 OLSYS1 MLE 60MA	13.1m	16.9m	22.3m	26.3m
96262311	OLSYS1 45W/BP5 LED CL2 4000K STR + 96262297 OLSYS1 MLE 60MA	14.6m	20.8m	28.0m	33.4m
96262321	OLSYS2 70W/BP8 LED CL2 4000K STR + 96262303 OLSYS2 MLE 60MA	-	-	23.7m	29.7m
96262323	OLSYS2 90W/BP8 LED CL2 4000K STR + 96262303 OLSYS2 MLE 60MA	-	-	24.7m	31.3m
P4 Category					
96262309	OLSYS1 24W/BP5 LED CL2 4000K STR + 96262297 OLSYS1 MLE 60MA	34.0m	39.7m	50.0m	58.0m
96262311	OLSYS1 45W/BP5 LED CL2 4000K STR + 96262297 OLSYS1 MLE 60MA	41.5m	48.4m	61.0m	71.6m
96262321	OLSYS2 70W/BP8 LED CL2 4000K STR + 96262303 OLSYS2 MLE 60MA	-	-	55.6m	66.0m
96262323	OLSYS2 90W/BP8 LED CL2 4000K STR + 96262303 OLSYS2 MLE 60MA	-	-	58.1m	69.7m
P5 Category					
96262309	OLSYS1 24W/BP5 LED CL2 4000K STR + 96262297 OLSYS1 MLE 60MA	39.6m	46.5m	58.9m	69.3m
96262311	OLSYS1 45W/BP5 LED CL2 4000K STR + 96262297 OLSYS1 MLE 60MA	47.3m	56.4m	70.2m	83.0m
96262321	OLSYS2 70W/BP8 LED CL2 4000K STR + 96262303 OLSYS2 MLE 60MA	-	-	61.8m	74.6m
96262323	OLSYS2 90W/BP8 LED CL2 4000K STR + 96262303 OLSYS2 MLE 60MA	-	-	64.2m	78.0m

Table above is to be used as a guide only. For detailed spacings calculations please contact your Thorn representative.



THORN

LIGHTING PEOPLE

Head Offices

Australia

Sydney

Thorn Lighting Pty Limited
43 Newton Road
Wetherill Park NSW 2164
Tel: (02) 8786 6000
Fax: (02) 9612 2700
e-mail: infoaustralia@thornlighting.com

www.thornlighting.com.au

Australian Branches

New South Wales

Sydney

43 Newton Road
Wetherill Park NSW 2164
Tel: 1300 13 99 65
Sales Fax: 1300 13 99 53
Project Fax: 1300 13 99 57

Northern Territory

Darwin

U10/19-23 Albatross St
Winnellie N.T. 0820
Tel: 1300 13 99 65
Sales Fax: 1300 13 99 53
Project Fax: 1300 13 99 57

Western Australia

Perth

2/32 Sarich Court
Osborne Park WA 6017
Tel: 1300 13 99 65
Sales Fax: 1300 13 99 53
Project Fax: 1300 13 99 57

Tasmania

Hobart

12 Fleet Street
Moonah TAS 7009
Tel: 1300 13 99 65
Sales Fax: 1300 13 99 53
Project Fax: 1300 13 99 57

South Australia

Adelaide

1 Graham Street
Export Park SA 5950
Tel: 1300 13 99 65
Fax: 08 83500011

Victoria

Melbourne

55 McGregors Drive
Keilor Park VIC 3042
Tel: 1300 13 99 65
Sales Fax: 1300 13 99 53
Project Fax: 1300 13 99 57

Queensland

Brisbane

2/106 Fison Avenue
Eagle Farm QLD 4009
Tel: 1300 13 99 65
Sales Fax: 1300 13 99 53
Project Fax: 1300 13 99 57

New Zealand

Auckland

399 Rosebank Road
Avondale, 1026
PO Box 71134
Rosebank, 1348
Tel: (64) 9 828 7155
Fax: (64) 9 828 7591

Thorn Lighting is constantly developing and improving its products. All descriptions, illustrations, drawings and specifications in this publication present only general particulars and shall not form part of any contract. The right is reserved to change specifications without prior notification or public announcement. All goods supplied by the company are supplied subject to the company's General Conditions of Sale, a copy of which is available on request. All measurements are in millimetres and weights in kilograms unless otherwise stated. Printed on Luxo Light.

Publication Date: 08/13



www.pefc.org