





Avenue Deco

	HSE (SE)	E27	70W
	HME (QE)	E27	125W
AS/NZS 60598		 Class I Electrical	
		IP54	

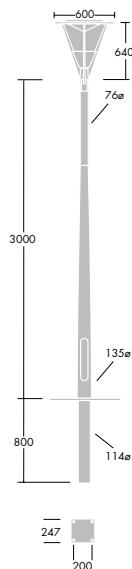
Design co-ordinated family of amenity luminaires comprising post top and wall bracket mounted lanterns and tapered columns

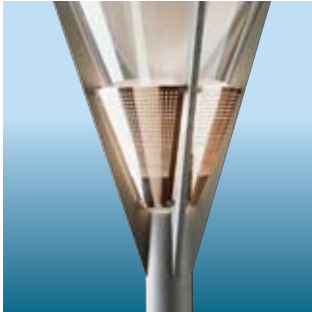
Design: Bjarne Frost and Peter Møller

- Design minimises the spread of light above the horizontal
- Variety of decorative lamp shields for lantern
- Column has choice of copper or steel finished sleeve to match lamp shields
- Control gear integral within lantern or bracket

Materials/Finish

Lantern body and canopy: cast aluminium, finished anthracite. Lantern bowl: clear polycarbonate opal to order. Lamp shields: opal polycarbonate, copper-plated steel or stainless steel. Column: aluminium, powder coated anthracite, fitted with a 0.9m decorative sleeve, finished in untreated polished copper or satin stainless steel.

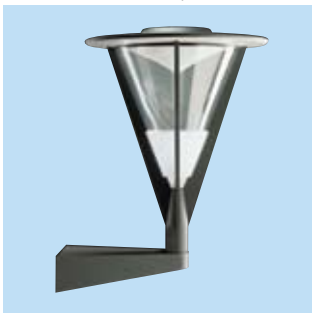




Copper perforated lamp shield



Stainless steel slotted lamp shield



Wall bracket lantern



Copper and stainless steel sleeves

Installation/Mounting

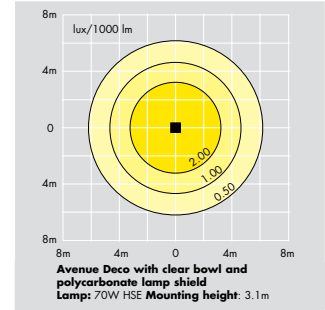
Lantern: Recommended mounting height 3m. Suitable for Ø60mm spigot. 3 way terminal block for 4mm² conductors. Integral control gear. Control gear in lantern or wall bracket.

Column: Root or flange plate mounted. Latter supplied with four fixing bolts (JT16/14 x 300). 3m column tapers from 135/ Ø114mm to Ø76mm with Ø60mm spigot.

Specification

To specify lantern state: Aluminium bodied conical lantern for post top/wall bracket mounting with opal/clear bowl and copper/stainless steel/perforated/slotted/opal polycarbonate diffuser, finished anthracite. Employing HSE/HME lamp. As Thorn Avenue Deco.

To specify column state: 3m tapered aluminium column with or without decorative sleeve, finished copper/stainless steel. Supplied for root/flange mounting. As Thorn Avenue Deco Column.



Ordering Guide

Order lantern and column for complete fitting. Lamps to be ordered separately.

Description	Ilcos Code	Socket	Wt (kg)	Cat. No.	SAP Code
Post top lantern with clear bowl flat canopy					
Complete with integral control gear.					
AVENUE DECO PT HSE 70W POLYCARBONATE LAMP SHIELD	SE	E27	17.0	J136443	96018379
AVENUE DECO PT HME 125W POLYCARBONATE LAMP SHIELD	QE	E27	17.0	J136337	96004507
AVENUE DECO PT HSE 70W COPPER (PERFORATED) LAMP SHIELD	SE	E27	17.0	J136429	96018377
AVENUE DECO PT HME 125W COPPER (PERFORATED) LAMP SHIELD	QE	E27	17.0	J136313	96005505
AVENUE DECO PT HSE 50W COPPER (SLOTTED) LAMP SHIELD	SE	E27	17.0	J136382	96018385
AVENUE DECO PT HSE 70W COPPER (SLOTTED) LAMP SHIELD	SE	E27	17.0	J136436	96100378
AVENUE DECO PT HME 125W COPPER (SLOTTED) LAMP SHIELD	QE	E27	17.0	J136320	96004506
AVENUE DECO PT HSE 70W STAINLESS STEEL (PERFORATED) LAMP SHIELD	SE	E27	17.0	J136405	96018376
AVENUE DECO PT HME 125W STAINLESS STEEL (PERFORATED) LAMP SHIELD	QE	E27	17.0	J136290	96004503
AVENUE DECO PT HSE 70W STAINLESS STEEL (SLOTTED) LAMP SHIELD	SE	E27	17.0	J136412	96010015
AVENUE DECO PT HME 125W STAINLESS STEEL (SLOTTED) LAMP SHIELD	QE	E27	17.0	J136306	96004504
Wall Bracket Lantern with clear bowl					
Control gear in bracket.					
AVENUE DECO WL HSE 70W POLYCARBONATE LAMP SHIELD	SE	E27	17.0	J137013	96005693
AVENUE DECO WL HSE 70W COPPER (PERFORATED) LAMP SHIELD	SE	E27	17.0	J137006	96005685
AVENUE DECO WL HSE 70W COPPER (SLOTTED) LAMP SHIELD	SE	E27	17.0	J137020	96005687
AVENUE DECO WL HSE 70W STAINLESS STEEL (PERFORATED) LAMP SHIELD	SE	E27	17.0	J136986	96005689
AVENUE DECO WL HSE 70W STAINLESS STEEL (SLOTTED) LAMP SHIELD	SE	E27	17.0	J136993	96005691
3m Tapered Columns					
COPPER SLEEVE, ROOT MOUNTED			21.0	J135446	96004477
STAINLESS STEEL SLEEVE, ROOT MOUNTED			21.0	J135477	96004479
COPPER SLEEVE, FLANGE PLATE			21.0	J135453	96004478
STAINLESS STEEL SLEEVE, FLANGE PLATE			21.0	J135484	96004480
WITHOUT SLEEVE, ROOT MOUNTED			21.0	J135361	96004475
WITHOUT SLEEVE, FLANGE PLATE			21.0	J135378	96004476

Metal Halide versions available to special order