

Contrast Attachments

A large choice of attachments with a unique fixing system, allowing them to superimpose one on the other, to offer a variety of lighting effects

Fixing

All attachments are supplied with a mounting frame which fixes via 2 or 4 nickel plated or stainless steel screws arranged symmetrically on the face of the frame. These allow any number of attachments to be mounted together, one on the other.

Contrast C



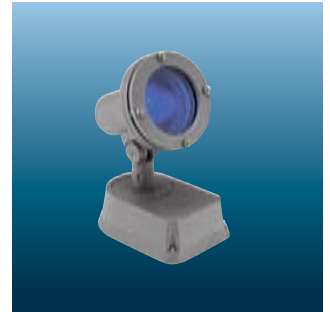
90° Fixed Louvre for all versions

Contrast R

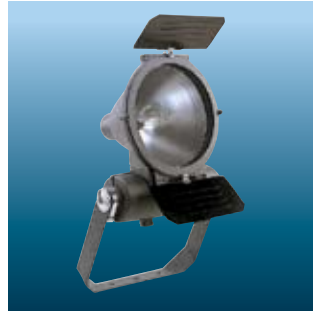
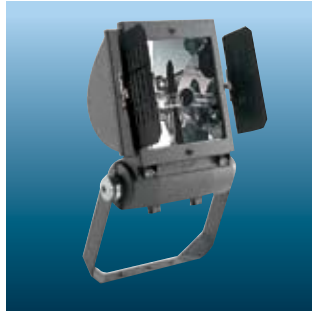


Wire Guard - Grille protecting glass against shocks

Pinspot



Colour Filter



Barn Doors - To cut-off the intensity in the horizontal or vertical plane. Adjustable and lockable



Colour Filters - Selection in blue, red, yellow and green. Supplied mounted in fixing frame



Aluminium visor. Can be mounted in four positions