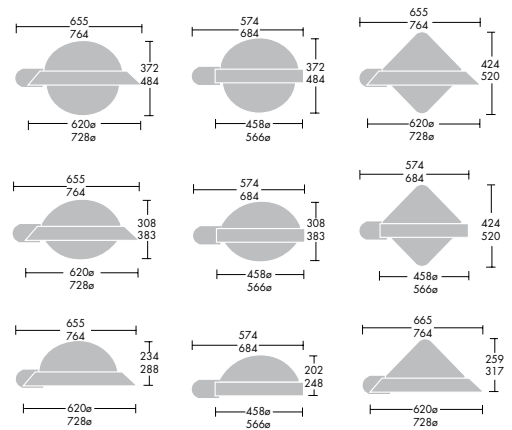


# Decostreet

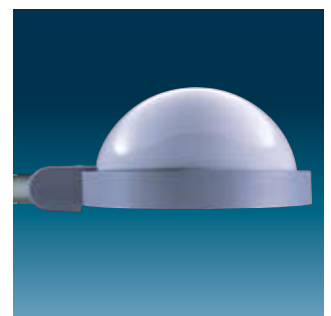
|                                     |                                   |                     |         |
|-------------------------------------|-----------------------------------|---------------------|---------|
|                                     | HST (ST)                          | E27/E40             | 70-250W |
|                                     | HIT-CE (MT)                       | E27/E40             | 70-250W |
| AS/NZS60598                         |                                   | Class II Electrical |         |
| Impact resistant: 20 Nm - glass,    |                                   |                     |         |
| 2 Nm - acrylic, 10 Nm polycarbonate |                                   |                     |         |
|                                     | Size 1: IP65 (optics)/IP54 (gear) |                     |         |
|                                     | Size 2: IP66 (optics)/IP44 (gear) |                     |         |

A range of street lanterns combining a wide variety of aesthetic choices with high photometric performances

- Choice of acrylic bowl or UV stabilised polycarbonate bowl for extra shock protection
- Flat glass enclosure in toughened glass for extra protection
- Polypropylene rings made from coloured raw material avoid discolouration or fading
- Canopy in painted aluminium available to special order
- The Decostreet Area 2 lantern has an alternative optic to the standard Decostreet offer giving a symmetrical light distribution, and is ideal for use on car parks, city squares, etc.
- High performance optical system (OPTIBLOC®) engineered for improved visibility and reduced glare
- IP66/65 dust tight and jet proof optical compartment
- Choice of discharge light sources
- Reversible and adjustable spigot for post top installation on poles Ø60mm or Ø76mm, or side entry installation for brackets, Ø42mm or Ø60mm. Both post-top and side entry can be achieved with the same fitting without the need for an adaptor
- A robust swivel joint allows an efficient suspended mounting option



Windage: Size 1: 0.11m² Size 2: 0.14m²



## Materials/Finish

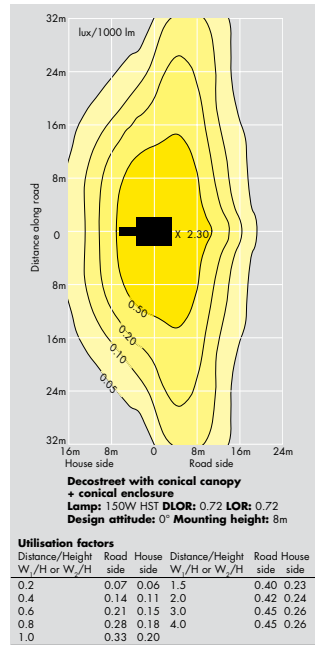
Body and spigot: die-cast aluminium.  
 Canopy: spun aluminium, painted RAL 7001. Other colours available on request.  
 Enclosures: acrylic or polycarbonate bowls or toughened flat glass.  
 Ring and spigot cover: polypropylene, ring is RAL 7012.  
 Reflector: aluminium.

## Installation/Mounting

Post top (Ø76mm and Ø60mm) or side entry (Ø42mm and Ø60mm).  
 Suspended mounting with swivel bracket. Fixes to Ø42mm bracket or Ø60mm bracket with 60/42mm adaptor.

## Specification

To specify state:  
 Decorative street lantern in die cast aluminium with spun aluminium canopy in various shapes and choice of cone, sphere, oval or flat glass enclosure. 70/150/250W HST, 70/150/250W HIT, light sources. Side entry or post top. Road/Area OPTIBLOC® lamp compartment with self isolating lampholder Sealed to IP66/65.  
 As Thorn Decostreet.



Kurawa Park, QLD

**Ordering Guide** Lamps to be ordered separately. For complete fitting please order, gear tray, lantern and accessories.

| Description  | Ilcos Code | Socket | Decostreet 1 |             |          | Decostreet 2 |              |          |
|--|------------|--------|--------------|-------------|----------|--------------|--------------|----------|
|  |            |        | Wt (kg)      | Cat. No.    | SAP Code | Wt (kg)      | Cat. No.     | SAP Code |
| <b>Gear Trays</b>  |            |        |              |             |          |              |              |          |
| HST/HIT-CE 70W   | ST/MT      | E27    | 2.2          | DST1GTN70.4 | 96012412 | -            | -            |          |
| HST/HIT-CE 150W  | ST/MT      | E40    | -            | -           |          | 3.1          | DST2GTN150.4 | 96011304 |
| HST/HIT-CE 250W  | ST/MT      | E40    | -            | -           |          | 3.8          | DST2GTN250.4 | 96011418 |
| <b>Lanterns</b>  |            |        |              |             |          |              |              |          |
| DECOSTREET ROUND CANOPY, ROUND ACRYLIC ENCLOSURE           |            |        | 6.5          | DST1P H/RMC | 96002522 | 8.0          | DST2P H/RMC  | 96002395 |
| DECOSTREET ROUND CANOPY, ROUND POLYCARBONATE ENCLOSURE     |            |        | 6.5          | DST1P H/RPC | 96005929 | 8.0          | DST2P H/RPC  | 96002393 |
| DECOSTREET OVAL CANOPY, OVAL ACRYLIC ENCLOSURE             |            |        | 6.5          | DST1P E/OMC | 96002523 | 8.0          | DST2P E/OMC  | 96002396 |
| DECOSTREET OVAL CANOPY, OVAL POLYCARBONATE ENCLOSURE       |            |        | 6.5          | DST1P E/OPC | 96005928 | 8.0          | DST2P E/OPC  | 96002392 |
| DECOSTREET CONICAL CANOPY, CONICAL ACRYLIC ENCLOSURE       |            |        | 6.5          | DST1P C/CMC | 96002524 | 8.0          | DST2P C/CMC  | 96002397 |
| DECOSTREET CONICAL CANOPY, CONICAL POLYCARBONATE ENCLOSURE |            |        | 6.5          | DST1P C/CPC | 96005927 | 8.0          | DST2P C/CPC  | 96002391 |
| DECOSTREET ROUND CANOPY, FLAT GLASS ENCLOSURE              |            |        | 7.1          | DST1P H/FG  | 96002525 | 9.0          | DST2P H/FG   | 96002398 |
| DECOSTREET OVAL CANOPY, FLAT GLASS ENCLOSURE               |            |        | 7.1          | DST1P E/FG  | 96002526 | 9.0          | DST2P E/FG   | 96002394 |
| DECOSTREET CONICAL CANOPY, FLAT GLASS ENCLOSURE            |            |        | 7.1          | DST1P C/FG  | 96002527 | 9.0          | DST2P C/FG   | 96002399 |
| <b>Accessories</b>   |            |        |              |             |          |              |              |          |
| DECOSTREET STRAIGHT RING                                   |            |        | 1.7          | DST1 RINGS  | 96002534 | 1.8          | DST2 RINGS   | 96002406 |
| DECOSTREET CONICAL RING                                    |            |        | 1.7          | DST1 RINGC  | 96002535 | 1.8          | DST2 RINGC   | 96002407 |