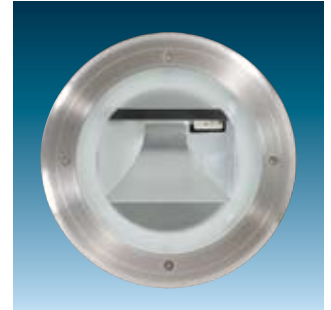


E/Fact Slim 3

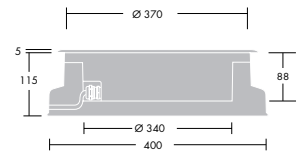
HIT-DE (MD)	RX7s	70W
AS/NZS60598	Class I Electrical	
IK09	IP67	

Shallow, outdoor recessed luminaires for use in gardens, walkways and pedestrian areas and for the illumination of facades and architectural features

- Supplied with electronic ballasts offering reduced power consumption, easy dimming, flicker free operation and increased lamp life
- Specially designed asymmetric reflector that provides low cut off for even facade illumination
- Easy installation ensured by separate recessing housing and pre-wired fittings with a 0.5m cable supplied



E/Fact Slim 3, round with semi frosted glass



Cutout 328



Installation/Mounting

Recessing housing (ordered separately) arranged for cable entry on all 4 sides.

Luminaire supplied pre-wired with 0.5m cable (H07RN-F).

For outdoor applications, 300mm drainage gravel, or any equivalent drainage system, must be used under the recessing housing to ensure easy water evacuation.

Maximum static weight: 500Kg.
Maximum walkover weight: 1000Kg.

Materials/Finish

Body: die cast aluminium EN AB44100 (copper free) and powdered paint for high corrosion resistance. Frame and retaining screws: stainless steel.
Front glass: toughened sodic calcic glass, part frosted.
Gasket: silicone.
Recessing housing: polypropylene.

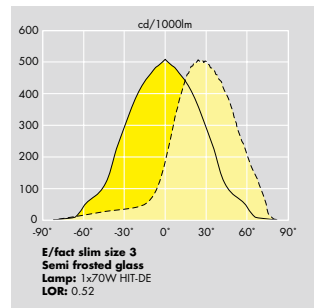
Specification

To specify state:
Shallow recessed, walkover luminaire, round with polypropylene recessing housing, stainless steel frame and die cast aluminium body sealed to IP67. Available in 70W MH.

As Thorn E/Fact Slim 3.

Ordering Guide Integrated gear. Lamps to be ordered separately. For complete fitting order luminaire and recess housing.

Description	Ilcos Code	Socket	Wt (kg)	SAP Code
Round - Semi-Frosted - Ground				
E/FACT R3SLIM/G 70W HIT-DE/RX7S SF	MD	RX7S	5.5	96231450
Accessories				
E/FACT R3SLIM RH	ROUND RECESSED HOUSING			96231614



RECESSED FLOODLIGHTING