

	HSE (SE)	E40	150-250W
	HST (ST)	E40	400W
	HIE (ME)	E40	150-400W
AS/NZS 60598			Class I Electrical
IP23			

A shallow discharge fitting for low mounting heights, and robust steel box construction

- Suitable for industrial and commercial interiors
- Rigid steel body for added strength
- Suspension or direct ceiling mounting
- High performance reflector system
- Choice of lamp types
- Range of attachments including wire guard and polycarbonate visor



Materials/Finish

Body: white powder coated polyester mild steel.
Reflector: anodised high reflectivity aluminium.

Installation/Mounting

Cable entry via Ø20mm hole or through end panel.
Conduit fixing (20mm).
For conduit or ceiling mounting use all four fixing holes.

Specification

To specify state:
Shallow discharge reflector luminaire of rigid steel box construction for 150/250W HSE, 400W HST high pressure sodium and 150/250/400W HIE metal halide lamps.
As Thorn Lopak.

Ordering Guide

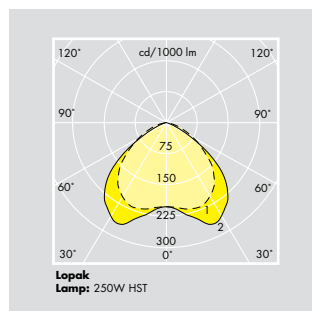
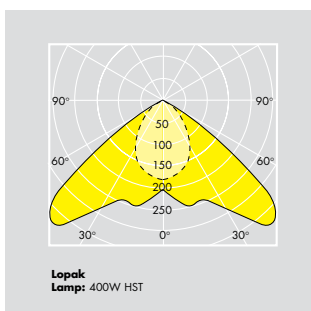
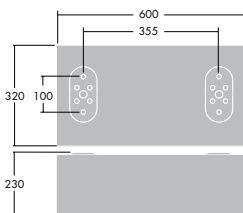
Supplied complete with lamp.

Description	Ilcos Code	Socket	Wt (kg)	Cat. No.	SAP Code
LOPAK 150W HSE	SE	E40	8.3	DLS150A	96016206
LOPAK 250W HSE	SE	E40	8.6	DLS250A	96016207
LOPAK 400W HST	ST	E40	9.8	DLS400.TA	96016209
LOPAK 150W HIE	ME	E40	8.3	DLC150A	96016189
LOPAK 250W HIE	ME	E40	8.6	DLC250A	96016190
LOPAK 400W HIE	ME	E40	9.8	DLC400A	96016193

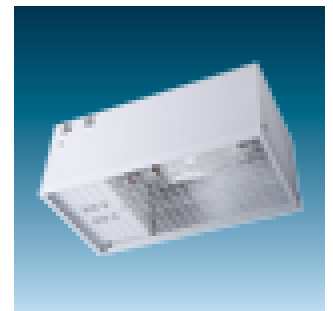
Attachments

LOPAK ESH PC	POLYCARBONATE ENCLOSURE	0.7	DLVA**	96030661
LOPAK KIT WG	WIRE GUARD KIT	2.3	DLGA	96063093

**Only suitable for 150/250W versions



Polycarbonate visor (150/250W only)



Wire guard