
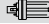
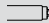



# Guardian Recessed Bottom Access

	TC-L (FSD)	2G11	40W
	TC-TEL (FSM)	Gx24q-3	32W
	T26 (FD)	G13	36W
AS/NZS 60598			 Class 1 Electrical

A recessed bottom access fluorescent luminaire with robust construction designed for high security applications

- Integral HF control gear
- 9W TC-S night light options
- Separate circuits available for emergency operation (EM)/UPS
- 4.5mm stippled polycarbonate lens
- Bottom access via stainless steel countersunk security screws

## Materials/Finish

Body: 0.8mm sheet steel with powder coat white finish.  
Diffuser: 4.5mm stippled polycarbonate.  
Trim: 3mm extruded aluminium T section with a powder coat white finish.  
Security screws: Stainless steel.

## Installation/Mounting

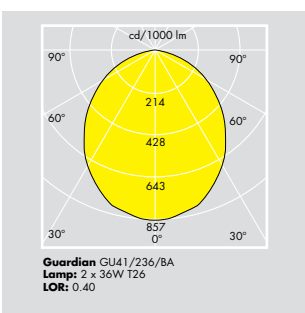
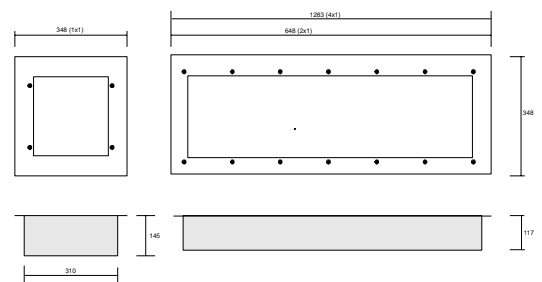
Recessed ceiling mounted with access to lamp and control gear via security screws and diffuser removal. Fused terminal block suitable for 2 x 2.5mm<sup>2</sup>

## Specification

To specify state:

Recessed mounted bottom access security luminaire twin 36W T26 single/twin 40W TC-L or twin 32W TC-TEL with high frequency electronic control gear and 4.5mm stippled polycarbonate diffuser.

As Thorn BA - Guardian Recessed Bottom Access.



## Ordering Guide

Supplied complete with lamp.

Description	Ilcos Code	Socket	Wt (kg)	Cat. No.	Cutout Size	SAP Code
<b>Recessed Bottom Access</b>						
2 x 36W T8 RECESSED BA 1200 x 300 HF	FD	G13	13.46	GU41/236/BA	315 x 1245	96039352
1 x 40W TC-L RECESSED BA 600 x 300 HF	FSDH	2G11	8.80	GU21/140/BA	315 x 610	96039354
2 x 32W TC-TEL RECESSED BA 300 x 300 HF	FSM	Gx24q-3	5.85	GU11/232/BA	312 x 312	96039355