

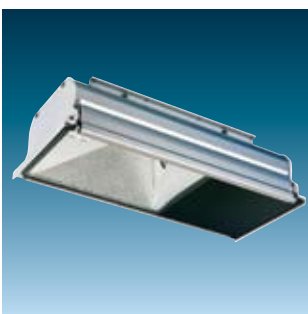
# Tunnel

As our road networks become more crowded, the use of tunnels and underpasses is expanding, both to improve traffic flow, and to protect local environments from increased traffic exposure

Within tunnels, where maintenance access can be limited, and where corrosive atmospheric conditions are common, reliable performance of the lighting system is critical, as is the need for the absolute minimum of operational maintenance requirements.

Each tunnel tends to have its own unique requirements. To respond to this need, Thorn can offer a specialist lighting design service to help the customer select the most suitable products from the wide range available.

For more information please contact your local Thorn Lighting branch.



Gotthard



Titan



Titus