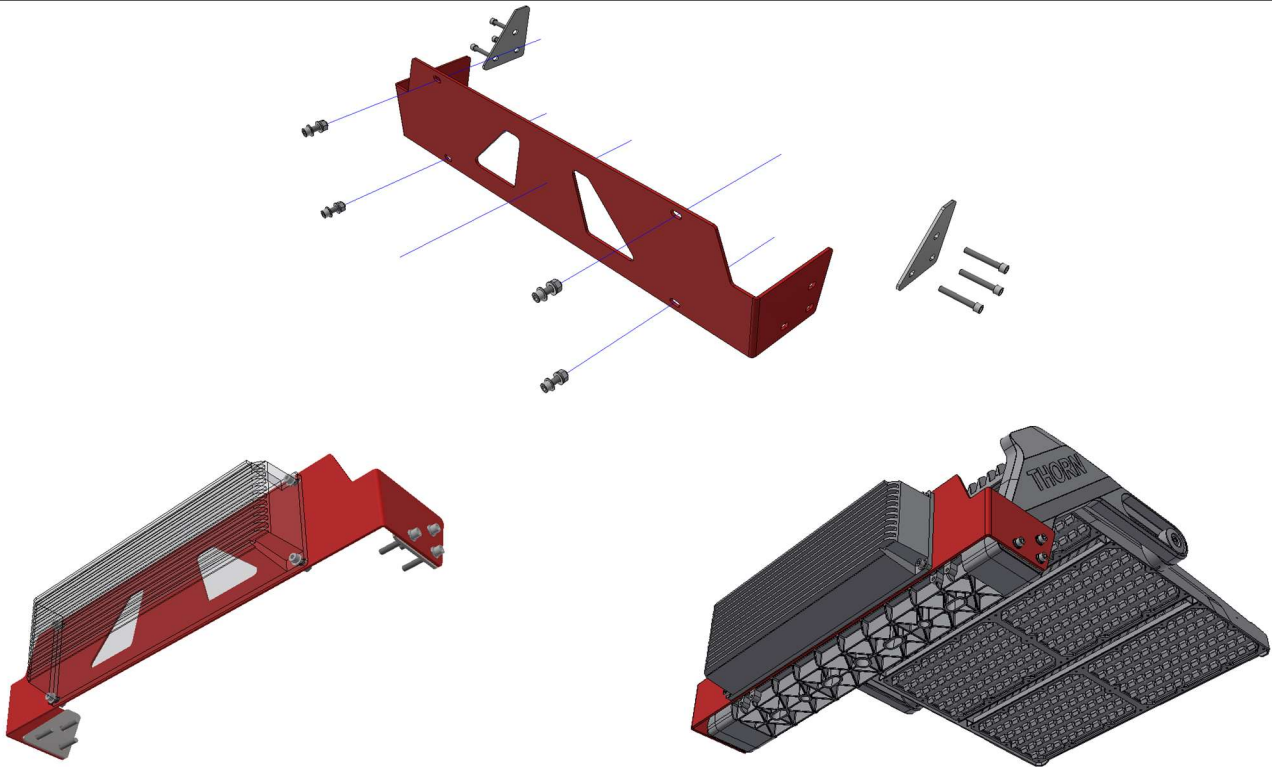


TROPHY GB MOUNTING BRACKET KIT

96652915



Warning:

Installation must be conducted by a qualified electrician in accordance with local wiring regulations. Any modifications to the luminaire may be conducted exclusively by qualified personnel and according to applicable provisions and regulations.

Caution: Risk of electric shock.

Ensure that the rated voltage and frequency of the luminaire are compatible with the electrical supply. Disconnect mains power supply before installing, servicing, or maintaining the luminaire.

Hot plug-in is not an option! This means that the luminaire must always be disconnected from the mains whenever it is being worked on. Otherwise, there is risk of damage to the LED.

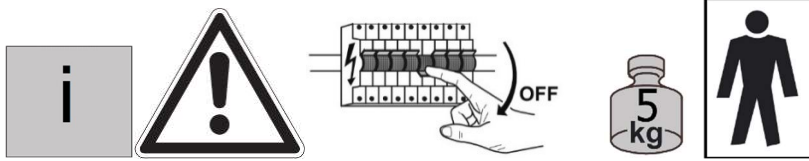
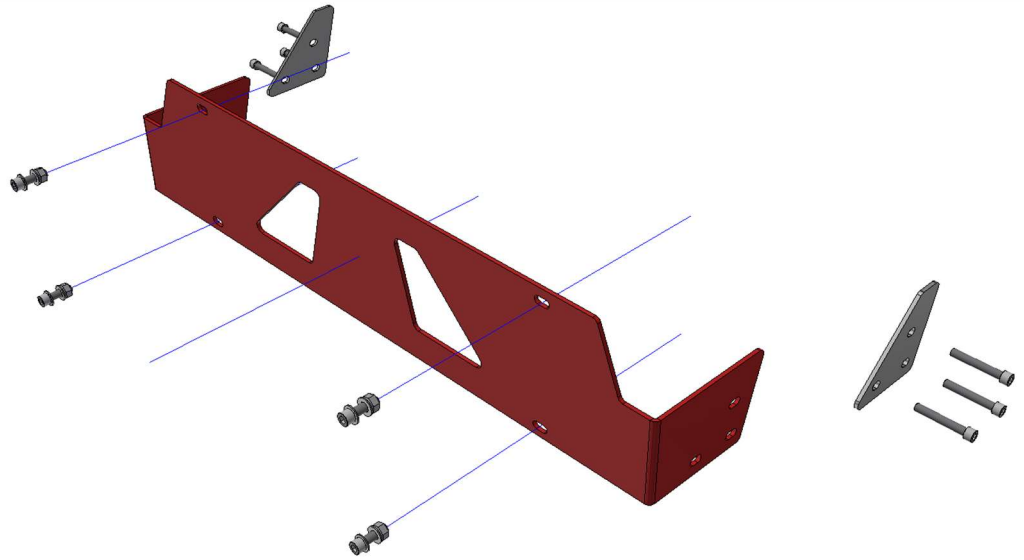
The manufacturer shall not be liable for any damage resulting from inappropriate modifications to the luminaire or faulty installation!

Non user replaceable light source:

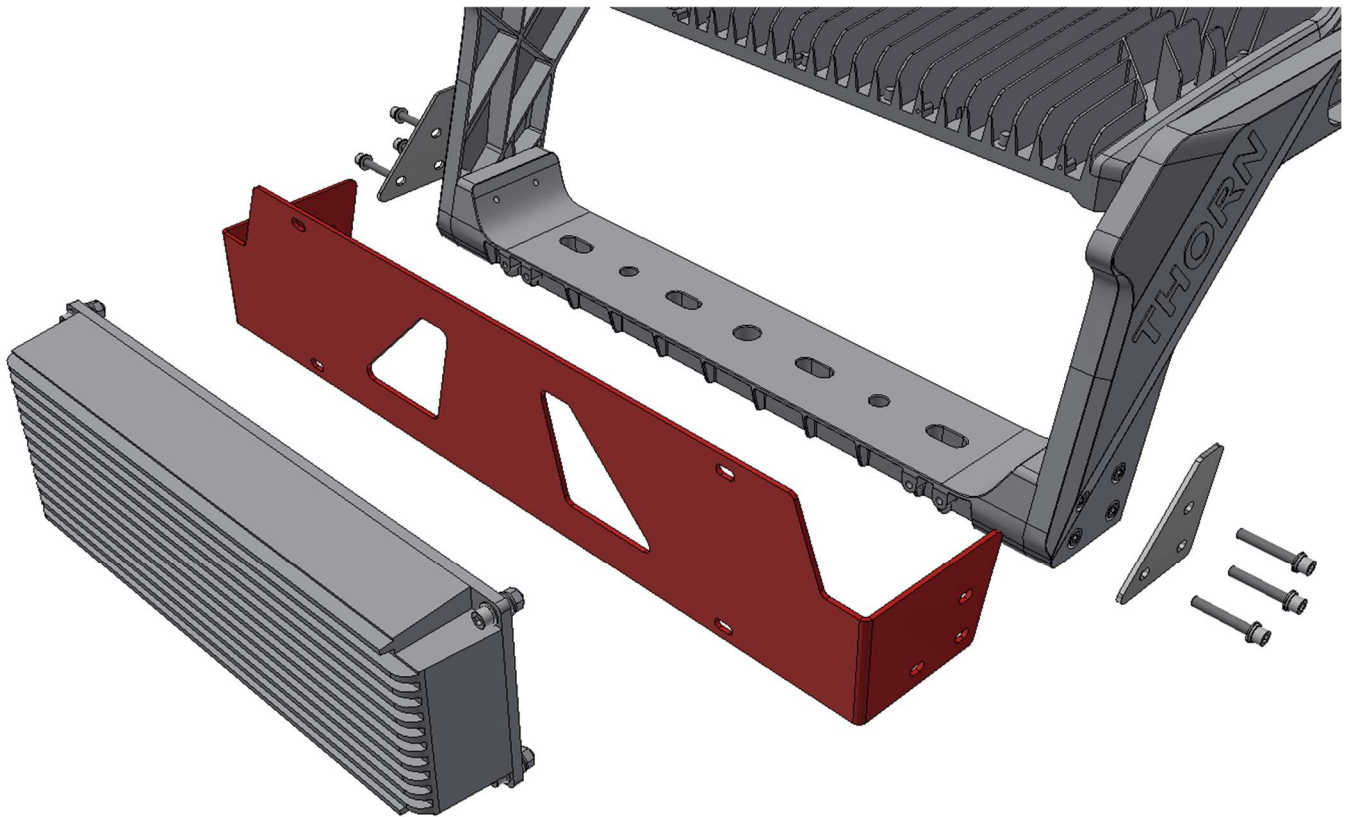
The light source contained in this luminaire shall only be replaced by the manufacturer or his service agent or a similar qualified person.

Changes to specification:

The right is reserved to change the design and/or specification without prior notice or public announcement.



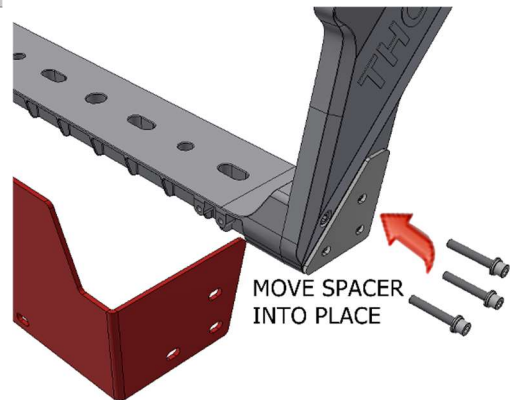
ASSEMBLY



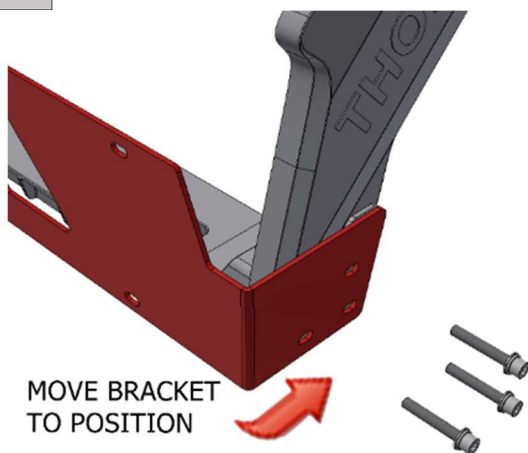
1



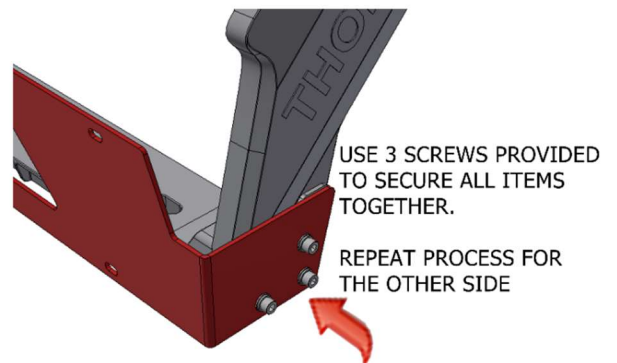
2



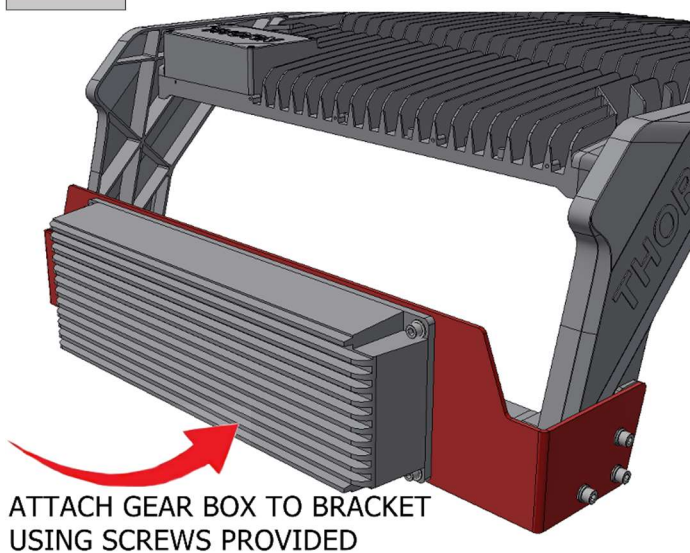
3



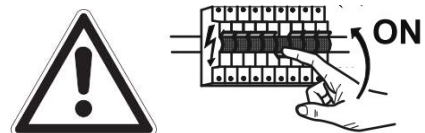
4



5



6



Code T-4603– rev A (20/02/24)

ZG Lighting Australia Pty Ltd
+61 1300 139 965
info.au@zumtobelgroup.com