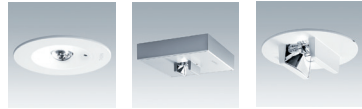


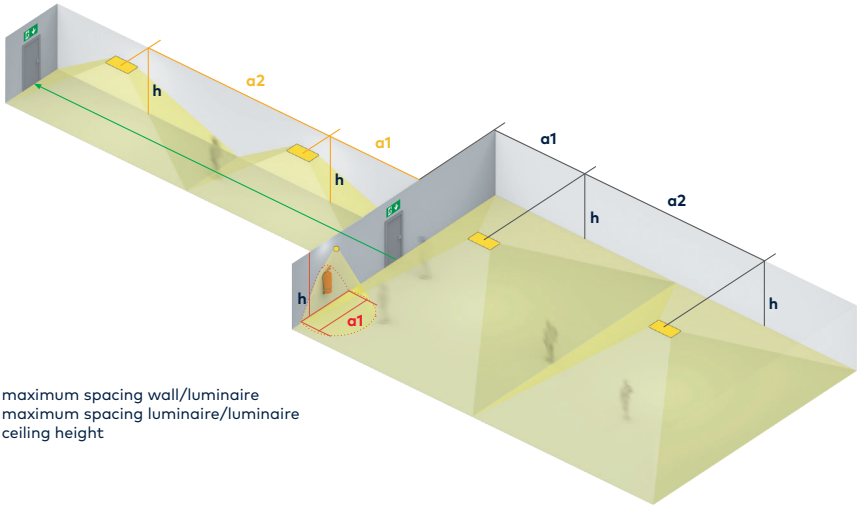
Voyager

LED Series E3



www.thornlighting.com/VYLD

Discrete, high performance,
LED emergency lighting



a1 = maximum spacing wall/luminaire
a2 = maximum spacing luminaire/luminaire
h = ceiling height

VOYAGER C LED AREA E3

h	antipanic (0,5 lx)	
	a1	a2
2,50	2,35	8,95
3,00	1,40	9,85
3,50	0,75	10,20
4,00	*	9,55
4,50	*	8,95
5,00	*	8,15

VOYAGER C LED ROUTE E3

h	escape (1 lx)	
	a1	a2
2,50	5,75	13,30
3,00	6,25	14,80
3,50	6,40	16,15
4,00	5,40	17,30
4,50	1,40	16,65
5,00	*	13,00

VOYAGER C LED SPOT E3

h	spot (5 lx)
	a1
2,50	2,15
3,00	2,30
3,50	2,30
4,00	2,05
4,50	*
5,00	*

All values in metres, all values for $t_a = 30\text{ }^\circ\text{C}$, maintenance factor = 0.8

* Determine a1 figure by means of lighting calculation (taking adjacent luminaires into account)