

Any modifications to the luminaire may be carried out exclusively by qualified personnel and according to applicable provisions and regulations.

Hot plug-in is not an option! This means that the luminaire must always be disconnected from the mains whenever it is being worked on. Otherwise there is risk of damage to the LED.

The manufacturer, shall not be liable for any damage resulting from inappropriate modifications to the luminaire or faulty installation!

Installation Instructions sheet - Base pro Enclosure
Document Rev A – (11.07.2021)

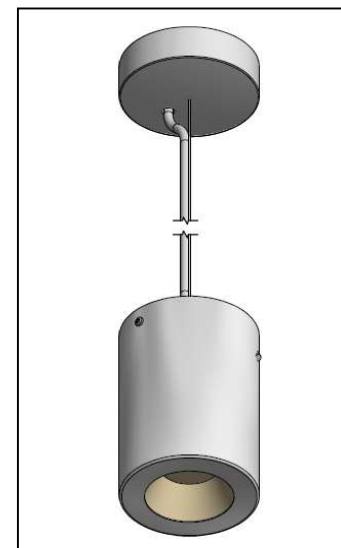
ZG Lighting Australia Pty Ltd
+61 1300 139 965
info.au@zumtobelgroup.com

CE IP20  

Base pro
Surface Mounting Enclosure



Base pro
Suspension Mounting Enclosure



Installation instructions applicable to all the following Codes

1. 96651429 - BASE PRO ENCLOSURE SURFACE MOUNTG 100 WH
2. 96651430 - BASE PRO ENCLOSURE SURFACE MOUNTG 100 BK
3. 96651448 - BASE PRO ENCLOSURE SURFACE MOUNTG 150 WH
4. 96651449 - BASE PRO ENCLOSURE SURFACE MOUNTG 150 BK
5. 96651680 - BASE PRO ENCLOSURE SURFACE MOUNTG 200 WH
6. 96651681- BASE PRO ENCLOSURE SURFACE MOUNTG 200 BK

7. 96651442 - BASE PRO ENCLOSURE SUSPENSION KIT 100 WH
8. 96651443 - BASE PRO ENCLOSURE SUSPENSION KIT 100 BK
9. 96651450 - BASE PRO ENCLOSURE SUSPENSION KIT 150 WH
10. 96651451 - BASE PRO ENCLOSURE SUSPENSION KIT 150 BK
11. 96651682- BASE PRO ENCLOSURE SUSPENSION KIT 200 WH
12. 96651683- BASE PRO ENCLOSURE SUSPENSION KIT 200 BK


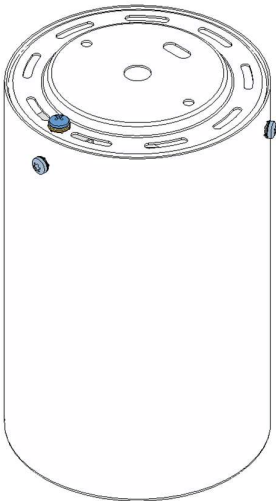


Installation instructions applicable to all the following Types

1. BASE PRO ENCLOSURE SURFACE MOUNTING 100mm
2. BASE PRO ENCLOSURE SURFACE MOUNTING 150mm
3. BASE PRO ENCLOSURE SURFACE MOUNTING 200mm

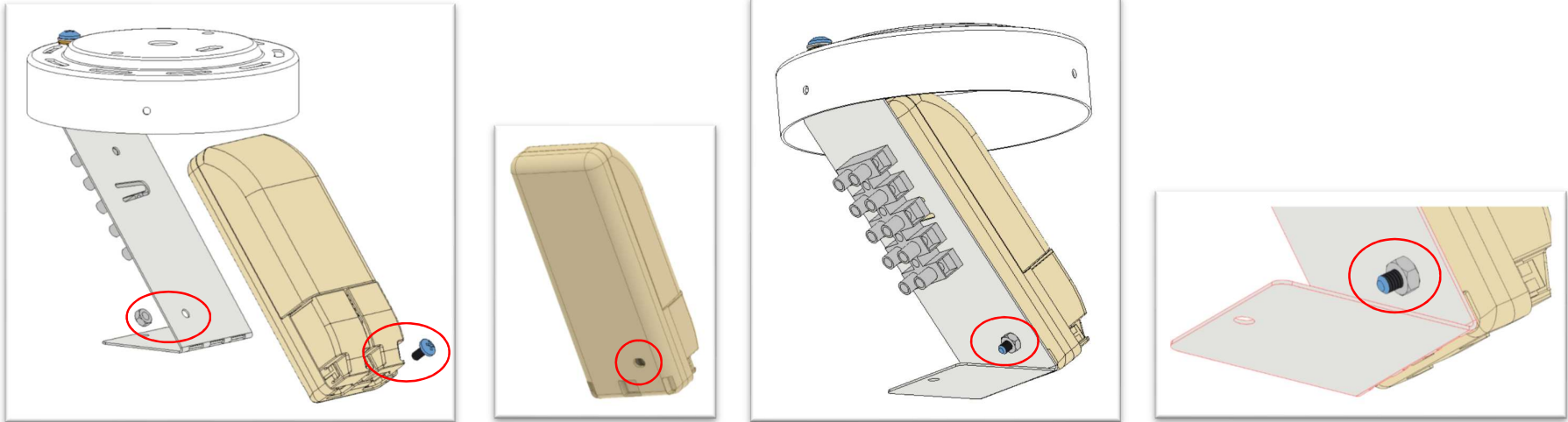
4. BASE PRO ENCLOSURE SUSPENSION KIT 100mm
5. BASE PRO ENCLOSURE SUSPENSION KIT 150mm
6. BASE PRO ENCLOSURE SUSPENSION KIT 200mm

Refer to “Base Pro Installation Instructions” to connect Driver to the LED lamp.

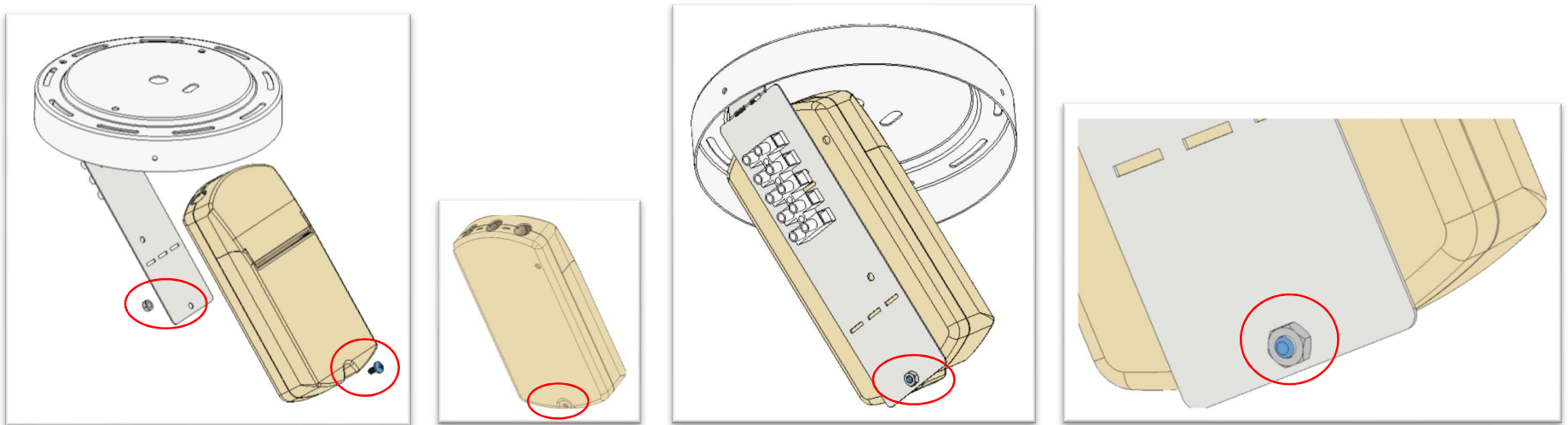
Items as Received

Base Pro – LED Box and Contents	Base Pro Enclosure: SURFACE MOUNTING KIT	Base Pro Enclosure: SUSPENSION KIT (Only applicable for Suspended Version Kits)
		<div data-bbox="1299 870 1493 1062">  </div> <div data-bbox="1556 894 1782 946"> <p>CEILING ROSE</p> </div> <div data-bbox="1257 1094 1497 1365">  </div> <div data-bbox="1545 1192 1969 1268"> <p>5 CORE CABLE\FLEX – 2200m Length Black or Transparent\Clear</p> </div>

1. Pickup Top Cover assembly & attach DRIVER to Bracket using Screw and Nut – Applicable for TYPE – Enclosure 100mm



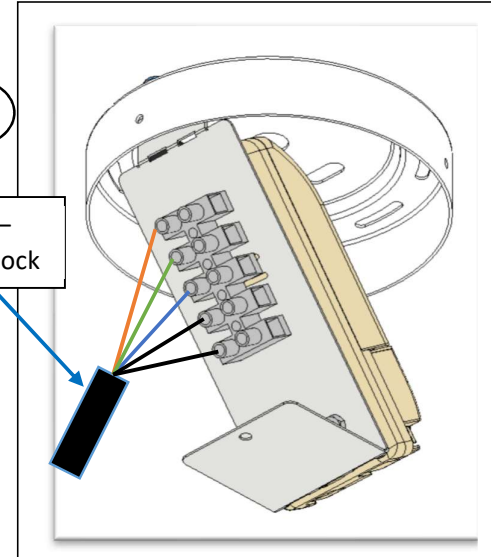
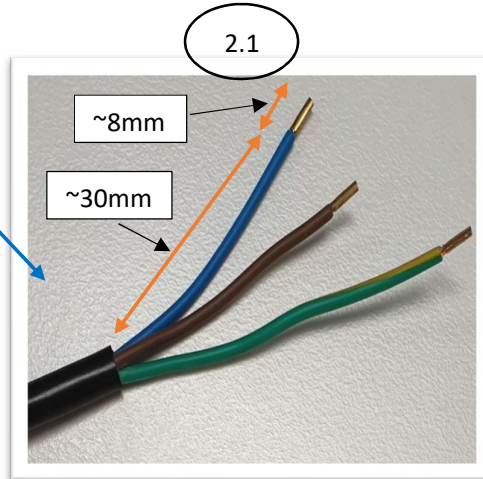
1.1 Pickup Top Cover assembly, attach DRIVER using Screw and Nut – Applicable for TYPES – Enclosure 150mm and 200mm



2. WIRING CONNECTIONS:

2.1. Strip Driver Flex and connect it one side of Terminal Block

2.2. Connect Driver to T/Block



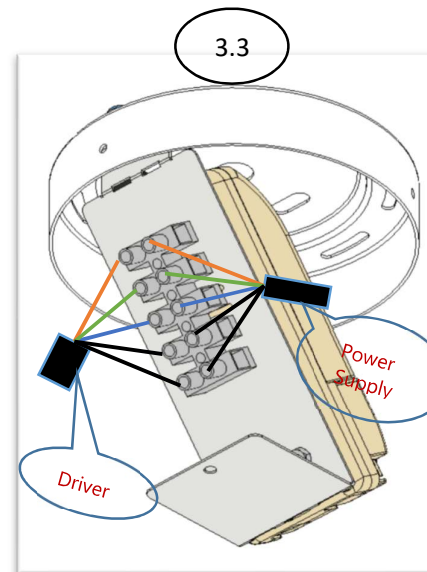
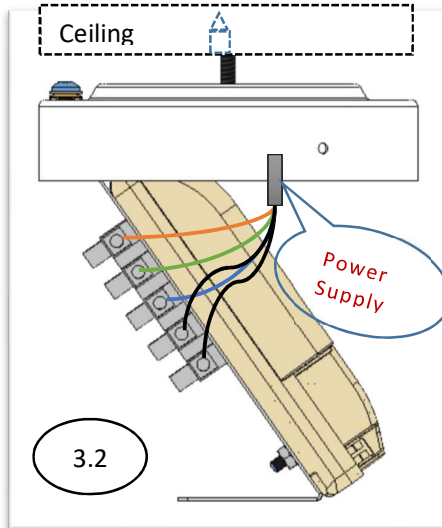
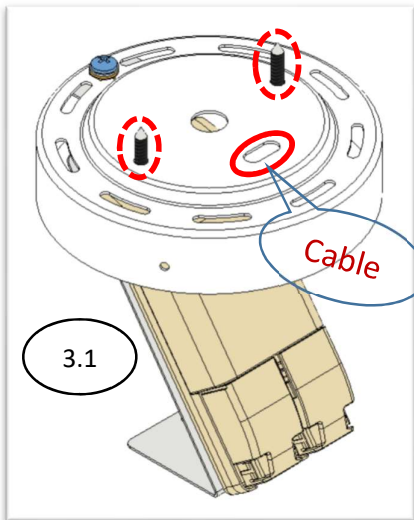
3. TOP COVER MOUNTING TO CEILING:

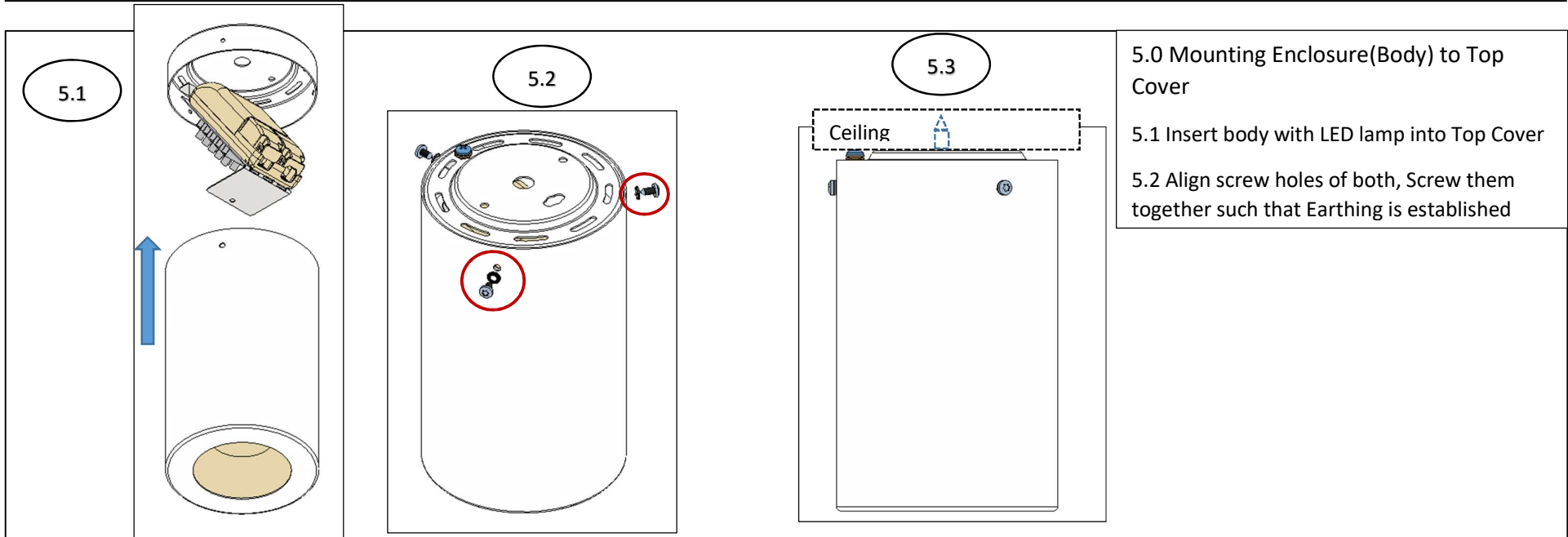
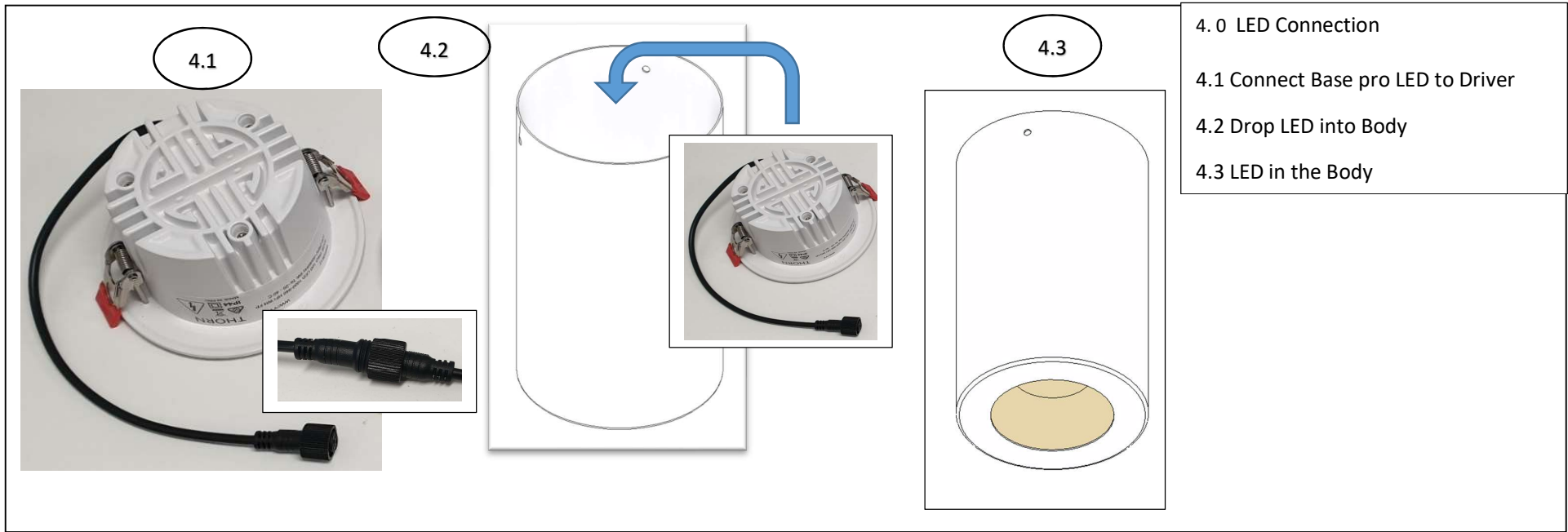
3.0 TOP COVER MOUNTING TO CEILING

3.1 Pull Service Cable through the marked Hole.

3.2 Attach "TOP COVER" to Ceiling with screws (by others).

3.3 Connect Service cable to Terminal Block as shown.





Base Pro Enclosure

Suspended Kit Installation Details

- 6.1 Attach Ceiling Rose Bracket to Ceiling (Fasteners by others)
- 6.2 Connect main power supply\service cable to T\block
- 6.2.1 Connect 5-core flex (supplied) to other side of Terminal block
- 6.2.2 Connect Earth cable to establish Earthing between Bracket and Cover
- 6.3 Attach (with screws) Ceiling Rose Cover to Bracket
- 6.4 Connect Wire Suspension Kit to CR Cover and Enclosure Top cover also do the same to 5-core cable\flex
- 6.5 Follow above "Surface Mounting Kit Installation instruction" from 1 to 5.2
- 6.6 Completed Base pro Suspension Kit installation

