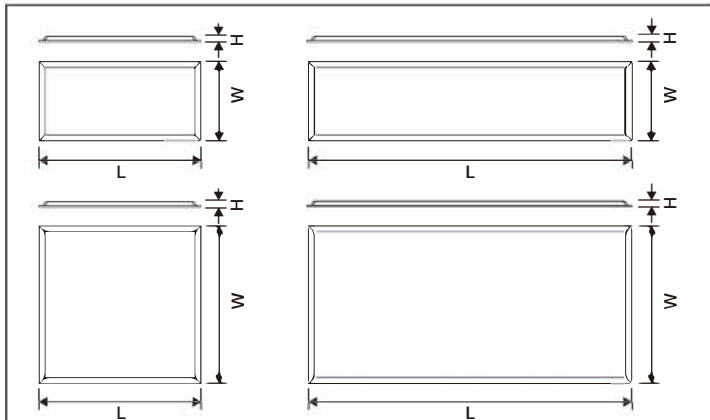


EN Installation Instructions

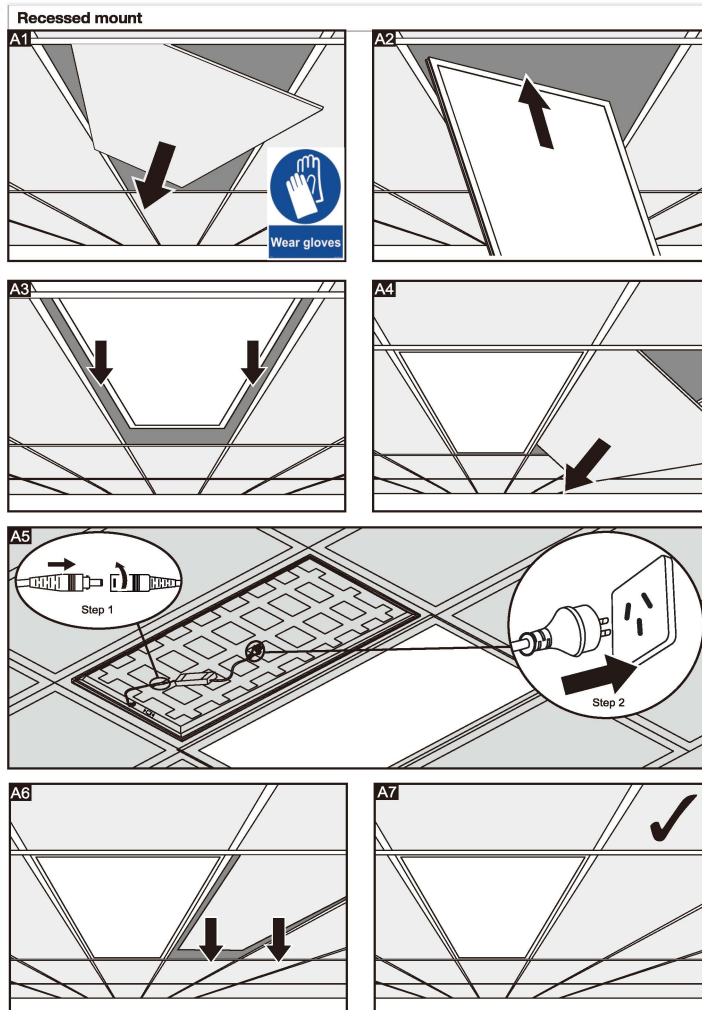


KIT Code	Product Description	Panel Code	Driver Code	Dimension LxWxH (mm)
96649256	ROYAL PRO LED4500-940 12X6 HF FP	96649217	96648562	1195x595x11
96649252	ROYAL PRO LED3500-940 12X3 HF FP	96649147	96648560	1195x295x11
96649260	ROYAL PRO LED3500-940 6X6 HF FP	96649218	96648560	595x595x11
96649264	ROYAL PRO LED2000-940 6X3 HF FP	96649219	96648565	595x295x11

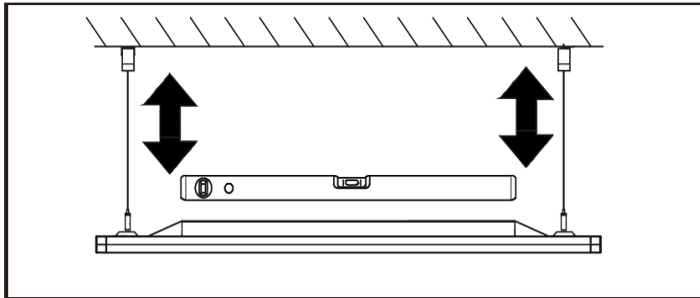
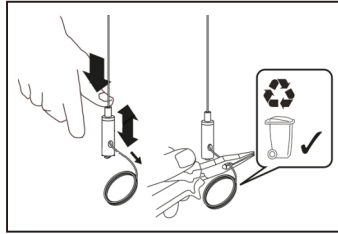
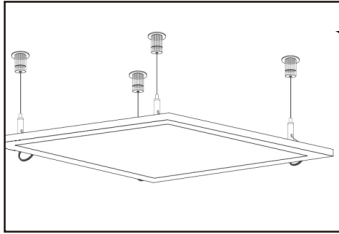
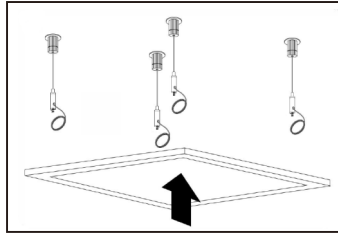
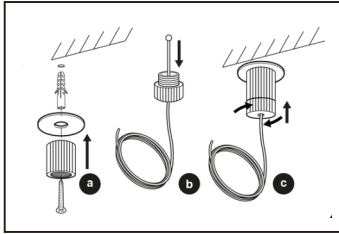
THORN ROYAL panels and drivers are supplied in two separate cartons as component kits, See above examples.



Caution: Risk of electric shock



Instructions for suspension kits



Caution: Risk of electric shock

EN Instructions for installation and operation!

The installation and commissioning of the luminaire as well as any modification to the luminaire may only be performed by authorised personnel (qualified electrician). National installation regulations must be observed. Before any work on the appliance is done, it must be disconnected from mains.

Hot plug-in is not an option and may cause damage to the LED modules!

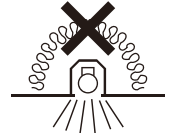
The manufacturer is not liable for damages resulting from improper or faulty installation or operation or from authorised modifications to the luminaire.



The light source contained in this luminaire shall only be replaced by the manufacturer or their service agent or a similarly qualified person. **Caution, risk of electric shock!**

Specifications are subject to change without notice! If you have questions, please contact the manufacturer.

1. Installation and maintenance should only be performed by a qualified electrical contractor in accordance with appropriate regulations.
2. Ensure power supply is isolated before installation and any maintenance.
3. The light source contained in this luminaire can only be replaced by the manufacturer or an approved service agent.
4. When installing, please don't force on the luminous surface.
5. If the external flexible cord of this luminaire is damaged, it shall be exclusively replaced by the manufacturer or their service agent or a similar qualified person in order to avoid a hazard.
6. The minimum distance from the top of the luminaire to any normally flammable building element is 100 mm.
7. The minimum distance from the top of the luminaire to any building insulation is 100 mm.
8. The minimum distance from the side of the luminaire to any normally flammable building element is 50 mm.
9. The minimum distance from the side of the luminaire to any building insulation is 50 mm.



The luminaire cannot be covered with thermal insulation matting or similar materials.

ZG LIGHTING AUSTRALIA PTY LTD

2/7 Millner Avenue Horsley Park NSW

2175 AUSTRALIA

ABN: 35 002 281 601

1300 139 965

Info.au@zumtobelgroup.com

www.thornlighting.com.au

ZG LIGHTING NEW ZEALAND

27 Jomac Place Avondale 1026

NEW ZEALAND

ABN: 290 3887 3843

+0800 800 834

Info.nz@zumtobelgroup.com

www.thornlighting.com.nz