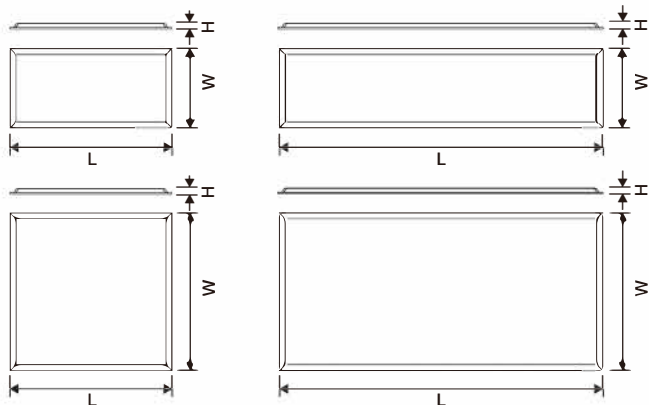


## EN Installation Instructions

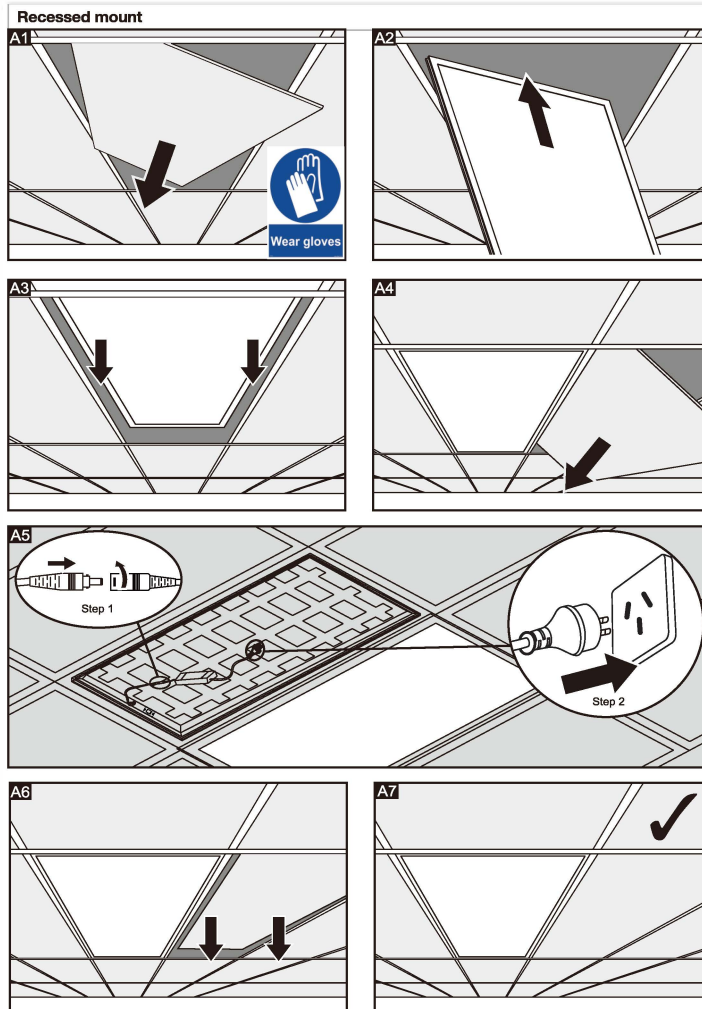


KIT Code	Product Description	Panel Code	Driver Code	Dimension LxWxH (mm)
96652770	ROYAL ELITE LED4500-940 12X6 HF FP	96652761	96648562	1196x596x33
96652766	ROYAL ELITE LED3500-940 12X3 HF FP	96652760	96648560	1196x296x33
96652774	ROYAL ELITE LED3500-940 6X6 HF FP	96652762	96648560	596x596x33
96652778	ROYAL ELITE LED2000-940 6X3 HF FP	96652763	96648565	596x296x33

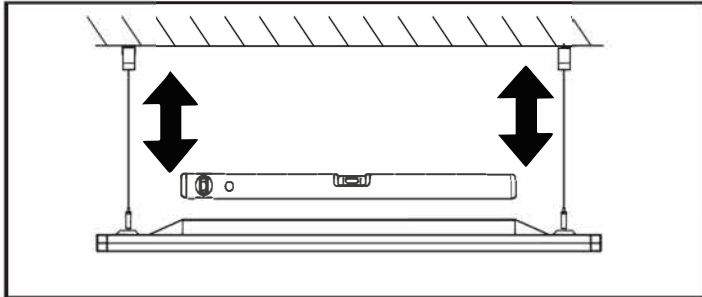
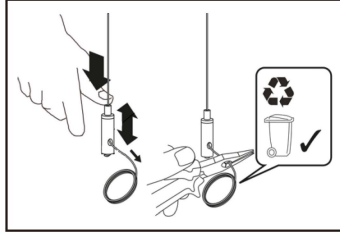
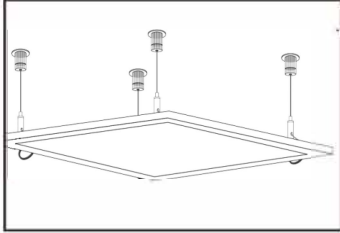
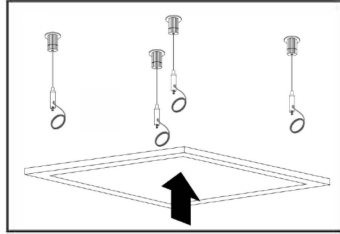
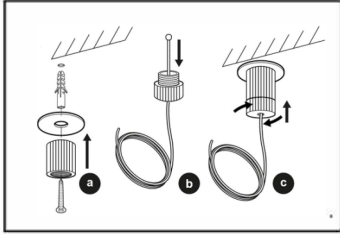
THORN ROYAL panels and drivers are supplied in two separate cartons as component kits, See above examples.



Caution: Risk of electric shock



## Instructions for suspension kits



Caution; Risk of electric shock

## EN Instructions for installation and operation!

The installation and commissioning of the luminaire as well as any modification to the luminaire may only be performed by authorised personnel (qualified electrician). National installation regulations must be observed. Before any work on the appliance is done, it must be disconnected from mains.

**Hot plug-in is not an option and may cause damage to the LED modules!**

The manufacturer is not liable for damages resulting from improper or faulty installation or operation or from authorised modifications to the luminaire.



The light source contained in this luminaire shall only be replaced by the manufacturer or their service agent or a similarly qualified person. **Caution, risk of electric shock!**

Specifications are subject to change without notice! If you have questions, please contact the manufacturer.

1. Installation and maintenance should only be performed by a qualified electrical contractor in accordance with appropriate regulations.
2. Ensure power supply is isolated before installation and any maintenance.
3. The light source contained in this luminaire can only be replaced by the manufacturer or an approved service agent.
4. When installing, please don't force on the luminous surface.
5. If the external flexible cord of this luminaire is damaged, it shall be exclusively replaced by the manufacturer or their service agent or a similar qualified person in order to avoid a hazard.
6. The minimum distance from the top of the luminaire to any normally flammable building element is 100 mm.
7. The minimum distance from the top of the luminaire to any building insulation is 100 mm.
8. The minimum distance from the side of the luminaire to any normally flammable building element is 50 mm.
9. The minimum distance from the side of the luminaire to any building insulation is 50 mm.



The luminaire cannot be covered with thermal insulation matting or similar materials.

### ZG LIGHTING AUSTRALIA PTY LTD

2/7 Millner Avenue Horsley Park NSW 2175

AUSTRALIA

ABN: 35 002 281 601

1300 139 965

Info.au@zumtobelgroup.com

www.thornlighting.com.au

### ZG LIGHTING NEW ZEALAND

27 Jomac Place Avondale 1026

NEW ZEALAND

ABN: 290 3887 3843

+0800 800 834

Info.nz@zumtobelgroup.com

www.thornlighting.com.nz