

# Champion Pro G3

THORN

26603586 <CHAMPION PRO G3 144L757 A60 MSK-D CP

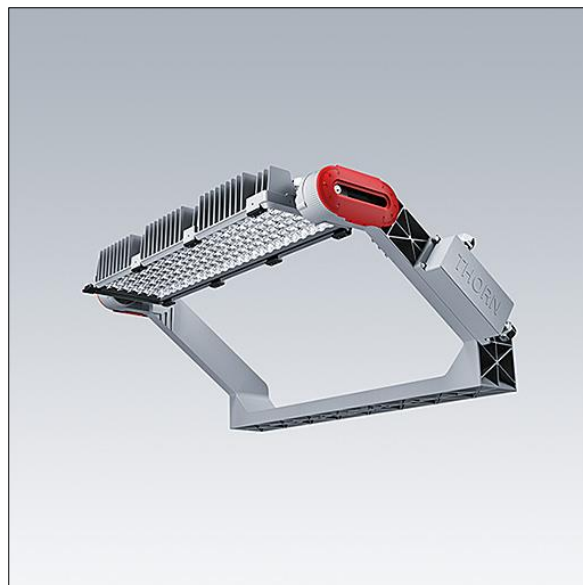
RoHS	IP66	IK08					650°C	T <sub>a</sub> -20 +45
------	------	------	---	---	---	---	-------	---------------------------

## Champion Pro G3

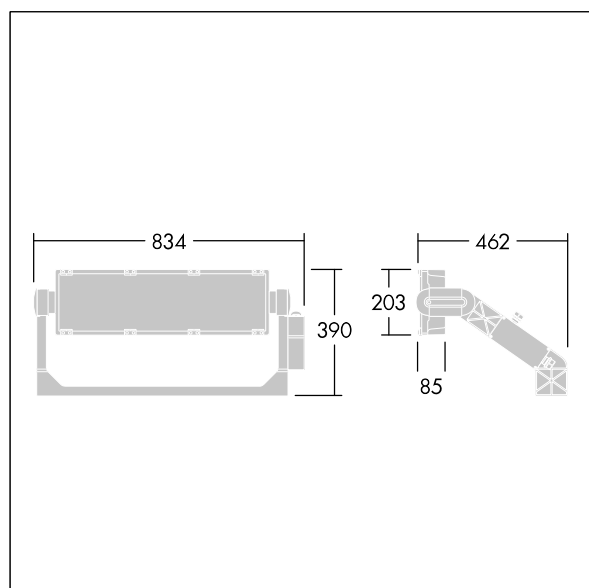
A high powered LED floodlight with asymmetrical 60° light distribution from 144 LEDs. Complete with mask down (MSK-D) optics for spill light control. External DALI dimmable LED driver 240-415V, to be ordered separately. Class I electrical, IP66, Impact strength: IK08. Heatsink, frame and mounting bracket: die-cast aluminium (EN AC-44300) powder coated silver grey (RAL 9007), suitable for coastal installation. Cover: 5mm clear tempered glass. Bracket mounted using fixation points available (one M20 screw or two M14 screws), suitable for over and under-sliding. Provided with Conduit Protection (CP) for bird resistant requirements. A single 3 core cable is required for the connection between floodlight and control gear. Ideal for sports fields and area lighting. Complete with 5700K LED with Colour Rendering Index min.: 70.

Due to the unique calculation requirements of this product the photometric data is not provided here but design advice may be obtained from your local representative.

Luminaire input power: 500 W  
Dimensions: 835 x 462 x 390 mm  
Weight: 20 kg  
Scx: 0.078 m<sup>2</sup> at 0°



TLG\_CHPP\_F\_G31.jpg



TLG\_CHPP\_M\_G31.wmf

All values marked with an \* are rated values. Thorn uses tried and tested components from leading suppliers, however there may be isolated instances of technology-related failures of individual LEDs during the rated product lifetime. International standards set the tolerance in initial flux and connected load at  $\pm 10\%$ . Unless stated otherwise, the values apply to an ambient temperature of 25°C.

Thorn Lighting is constantly developing and improving its products. The right is reserved to change specifications without prior notification or public announcement.  
© Thorn Lighting