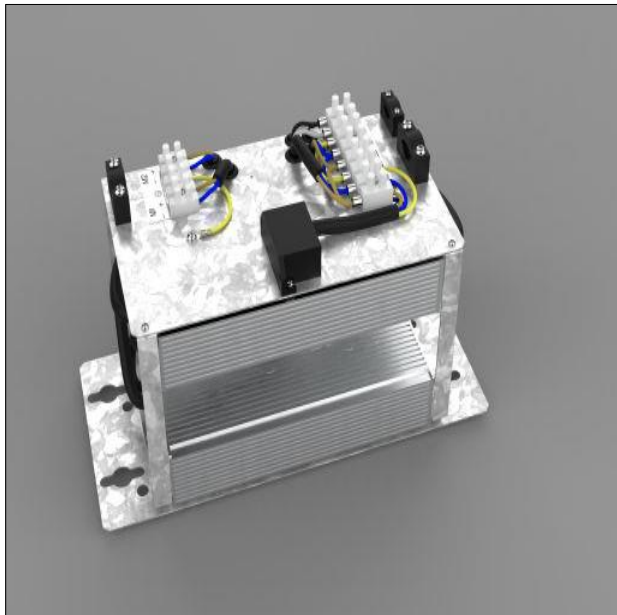


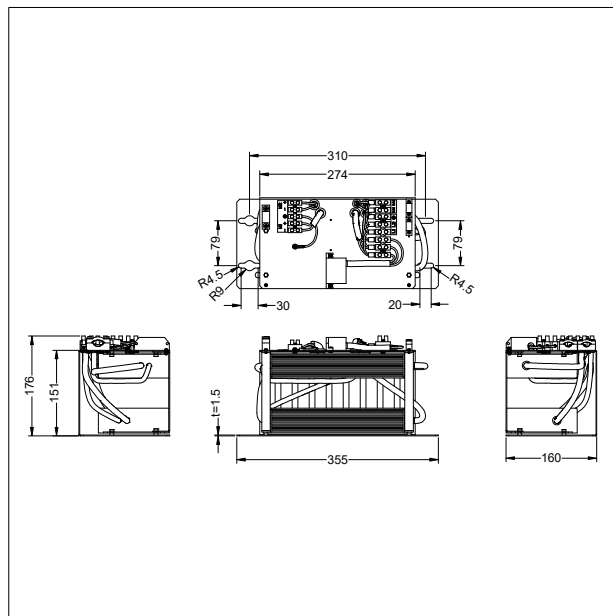
DALI electronic gear trays for Champion Pro G3 288L. To be installed remotely in pole or dedicated cabinet. Class I electrical, IP20, with 10kV surge protection. Nominal input voltage: 200-480V AC. Output wattage: 960W. Electrical connections via screw terminals. A single 5 core cable is required for the connection between floodlight and control gear (not supplied).

Housing: hot dipped galvanised steel sheet, for horizontal or vertical fixation by screws.

Weight: 6.8 kg



TLG_CHPP_F_G3GTO2.jpg



TLG_CHPP_M_G3GTO2.wmf