

Champion Pro G3

THORN

26603687 GT CHAMP G3 OPT 144L230 240-415V CL1DA

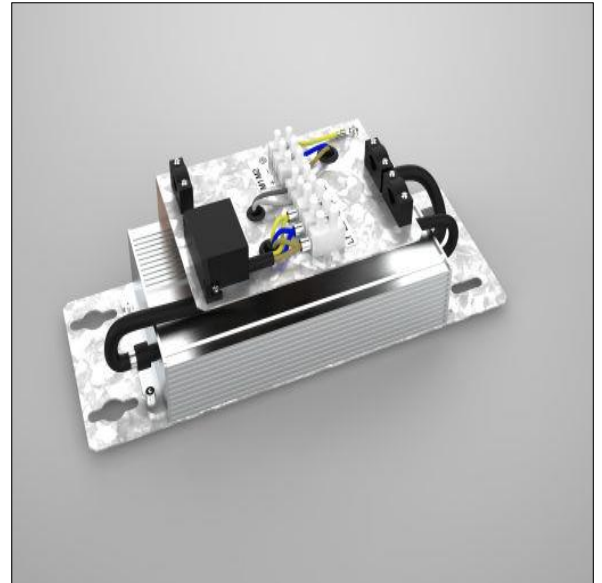
RoHS	IP20			T _a -20 +45
------	------	---	---	---------------------------

Champion Pro G3

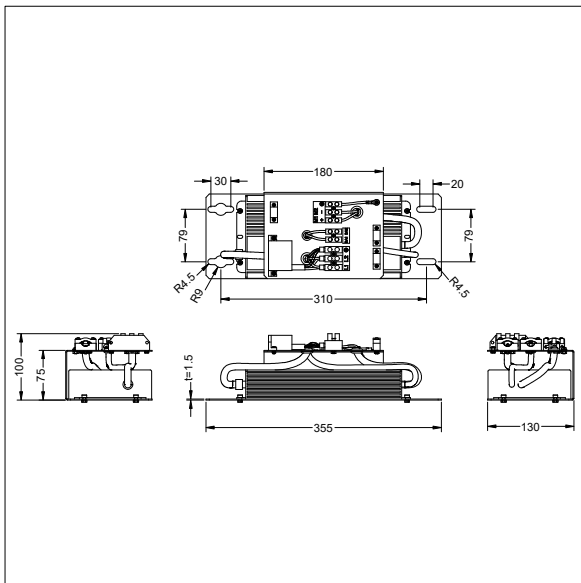
DALI electronic gear trays for Champion Pro G3 144L. To be installed remotely in pole or dedicated cabinet. Class I electrical, IP20, with 10kV surge protection. Nominal input voltage: 200-480V AC. Output wattage: 480W. Electrical connections via screw terminals. A single 3 core cable is required for the connection between floodlight and control gear (not supplied).

Housing: hot dipped galvanised steel sheet, for horizontal or vertical fixation by screws.

Weight: 3.5 kg



TLG_CHPP_F_G3GTO1.jpg



TLG_CHPP_M_G3GTO1.wmf

All values marked with an * are rated values. Unless stated otherwise, the values apply to an ambient temperature of 25°C.

Thorn Lighting is constantly developing and improving its products. The right is reserved to change specifications without prior notification or public announcement.
© Thorn Lighting