

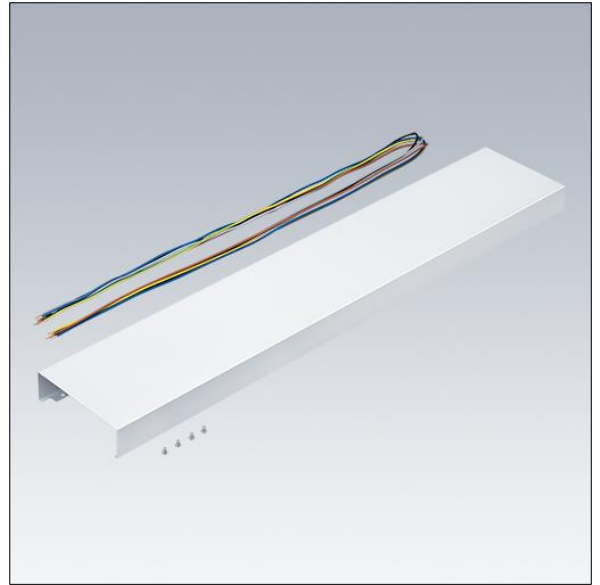
Punch

96635745 <PUNCH 3 LV INFILL L15

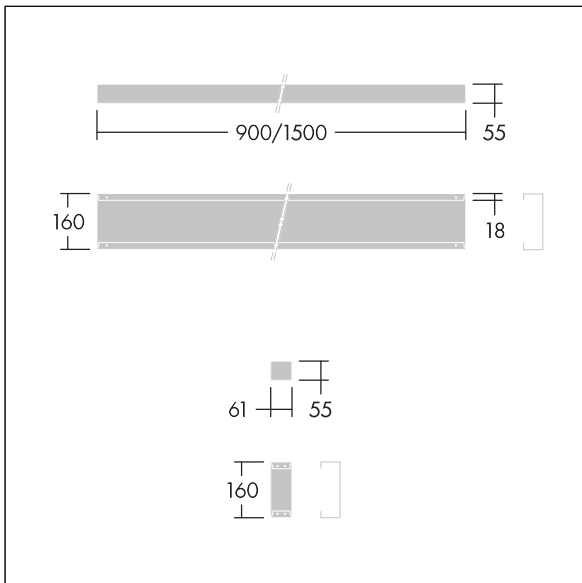
Punch

Infill panel for Punch LV continuous run installations. Body: sheet steel powder coated white (close to RAL9016). For electrical through wiring, additional cable for luminaire needed.

Weight: 2.85 kg



TLG_PNCH_F_Infill_1700.jpg



TLG_PNC3_M_LV_RESD_INFIL.wmf