

# Sirio Spot

THORN

96651969 SIRIO SPOT LED2000-930-55 STD DIM ZM BK

IP20	IK04			T <sub>a</sub> -20 +40
------	------	---	---	---------------------------

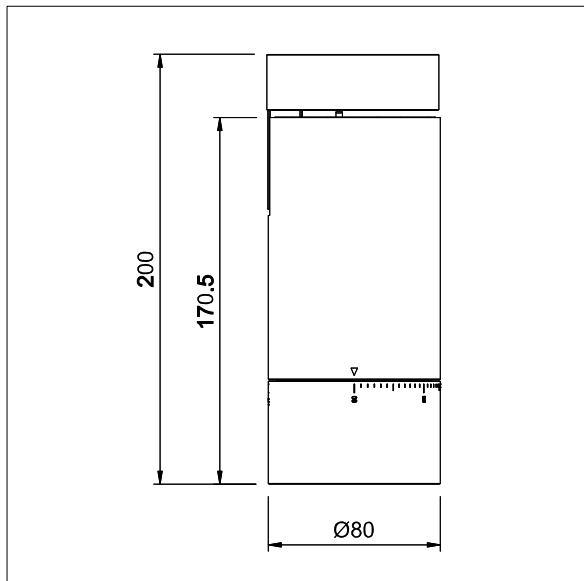
## Sirio Spot

An LED spotlight with the built in ability to adjust its zoom from a spot distribution to a wide flood distribution. Class I electrical, IP20. A die-cast aluminium body and ceiling mounted cable enclosure in a matte black. The Sirio spot surface mounted version maintains its ability to rotate through 350° and tilted up to 90°. Colour rendering Ra >90 and changeable vario colour temperature switch allowing the CCT choice of 3000K, 4000K and 5500K.

Dimensions: Ø80 x 170 mm  
Luminaire input power: 24.6 W  
Luminaire luminous flux: 1797 lm  
Luminaire efficacy: 73 lm/W  
Weight: 1 kg



TLG\_SIRIO\_F\_PH4.jpg



TLG\_SIRIO\_M\_DIM2.wmf

All values marked with an \* are rated values. Thorn uses tried and tested components from leading suppliers, however there may be isolated instances of technology-related failures of individual LEDs during the rated product lifetime. International standards set the tolerance in initial flux and connected load at ±10%. Unless stated otherwise, the values apply to an ambient temperature of 25°C.

Thorn Lighting is constantly developing and improving its products. The right is reserved to change specifications without prior notification or public announcement.  
© Thorn Lighting