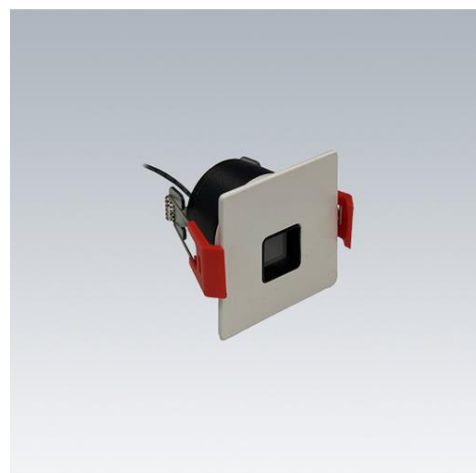


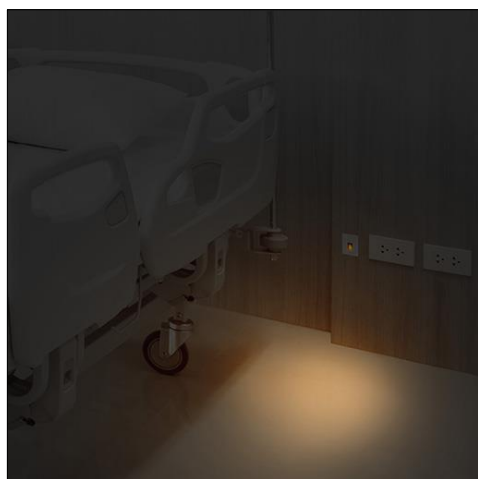
Recuvo N

Unobtrusive wall-recessed luminaire for orientation and night light in indoor spaces

- Slim frame and recessed optic to subtly be integrated in the architecture
- Dark optic, cut-off light emission and asymmetric optic to optimise the focus on the floor and immediate surroundings
- The low colour temperature (2200K), is particularly dedicated to the night time period, specifically designed to preserve the sleep quality in hospital's patient rooms, while guaranteeing sufficient visual capabilities
- IP44 room-side for easy cleaning and safety
- Suitable for healthcare, commercial and residential applications like patient rooms, staircases and corridors



Photographs, line drawings and photometric data are representative only. For specific product detail please select an individual product.



Material/Finish

Body: die cast aluminium.

Frame: die cast aluminium, powder coated white.

Glass: tempered glass, 2mm thickness.

Optics : cut-off optic with matt black reflector to minimise the upper spill light.

Installation/Mounting

Recuvo N is designed to be mounted recessed in the majority of wall types. The spring loaded fixation system and the circular recessed body make the installation easy and quick.

Ordering Guide

Description	ILCOS Code	Socket	Wt (kg)	SAP Code
Recuvo N				
RECUVO N 822 HFI	LED		0,25	96652624